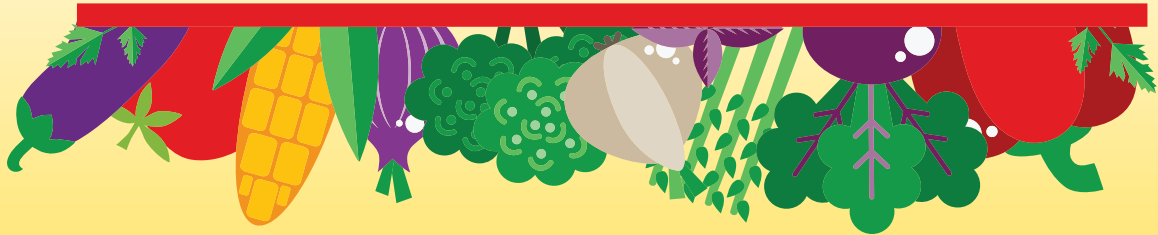




MARYLAND DEPARTMENT OF AGRICULTURE



# BUYER-GROWER EXPO DIRECTORY



[WWW.MARYLANDSBEST.NET](http://WWW.MARYLANDSBEST.NET)



**FRESH  
LOCAL**





## TABLE OF CONTENTS

**Event Sponsors..... Page 4**

**MDA Marketing Staff ..... Page 7**

**Maryland Map..... Page 8**

**Product List ..... Page 9**

**Seasonal Harvest Charts ..... Page 10**

**Translation Chart – “Pecks to Pounds”..... Page 12**

**GAP/GHP Information .....Page 14**

**Growers, Food Processors, and Watermen..... Page 15**

**Buyers and Distributors.....Page 33**

**Additional Attendees .....Page 47**



From  
**Maryland**  
fields

to  
**Maryland**  
schools



Your  
Choice  
Makes A  
Difference.



**Choose Maryland-Grown.**

Maryland Farm to School connects schools to local farms to provide Maryland students with fresh, nutritious, delicious foods.

[www.marylandfarmtoschool.org](http://www.marylandfarmtoschool.org)

# ACReS

## Mediate—Don't Litigate

### The Maryland Agricultural Conflict Resolution Service

- Can resolve conflicts between farmers and their neighbors, organizations and local governments
- Assists with agricultural credit issues
- Assists with unfavorable decisions by USDA agencies
- Offers confidential assistance to help resolve disputes
- Reduces the need for unnecessary litigation
- Increases understanding among agricultural producers, agencies, organizations and communities
- Strengthens agriculture through better communications

#### What is Maryland ACReS?

Maryland Agricultural Conflict Resolution Service (ACReS) is the official U.S. Department of Agriculture (USDA)—certified agricultural mediation program for Maryland, offering confidential assistance to help resolve agriculture related disputes before they end up in court.

#### What is Mediation?

Mediation is a voluntary, confidential process in which a neutral third party (the mediator) assists farmers, agricultural lenders, agencies, families and citizens to resolve disputes in a nonadversarial setting outside of the traditional legal and regulatory processes.

#### What are the Benefits of Mediation?

Mediation is:

- **Neutral** The mediator is impartial and has no vested interest.
- **Voluntary** All parties come to mediation under their own free will and can leave the process at anytime.
- **Confidential** Parties agree that communication between the parties will be confidential.
- **Time and Cost Efficient** The mediation process tends to be quicker than going to court. Mediation is generally less costly than litigation.
- **"Self-Determination"** Participants design the solution themselves.

#### What is the Cost?

An initial consultation with program staff and the initial mediation session is free. If additional mediation sessions are needed, nominal costs are shared by the parties. Full or partial waivers of fees may be available.

#### Want to Know More?

Contact Maryland ACReS at:



Maryland Department of Agriculture  
Room 208 | 50 Harry S. Truman Pkwy.  
Annapolis MD 21401  
410.841.5778 | 800.492.5590  
[www.marylandacres.com](http://www.marylandacres.com)



Larry Hogan  
Governor

Boyd Rutherford  
Lt. Governor

Joseph Bartenfelder  
Secretary

Mary Ellen Setting  
Deputy Secretary

ACReS is an official U.S. Department of Agriculture (USDA) certified agricultural mediation program.

# Maryland Agricultural and Resource-Based Industry Development Corporation

**Celebrating 10 Years of Helping Fund Maryland's Ag Businesses!**

**A few of our accomplishments since 2007 include:**

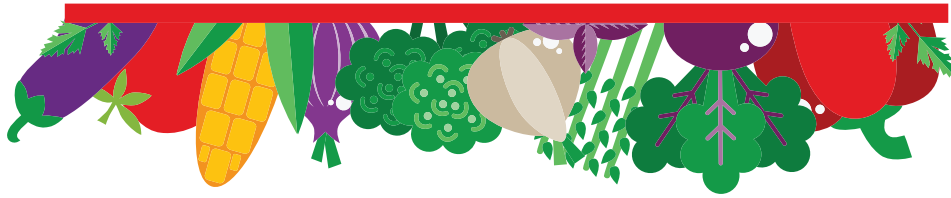
- **Helping over 200 young and beginning farmers with financial assistance (including first-time land purchases)!**
- **Funding over 400 farm and rural business projects in every county in Maryland!**
- **Supporting the implementation of over 150 on-farm value added processing projects!**

**MARBIDCO provides loans for farming (including shellfish aquaculture), commercial forestry, and seafood production and processing; as well as providing loans with a grant component for farm energy efficiency projects.**

**MARBIDCO partners with commercial lenders to offer low-interest loans to young and beginning farmers and other rural businesses looking to expand or diversify their operations.**

**Find out how MARBIDCO can help your farm, forestry or seafood business. Contact your local bank, farm credit association, or call us directly at (410) 267-6807 for more information.**





# MDA MARKETING STAFF

**Theresa Brophy, Director of International Marketing**

Phone: 410-841-5781, Theresa.brophy@maryland.gov

**Shelby Watson-Hampton, Agricultural Marketing Specialist – Farmer’s Markets**

Phone: 410-841-5776, Shelby.watson@maryland.gov

**Karen Fedor, Senior Agricultural Marketing Specialist – Farm to School**

Phone: 410-841-5773, Karen.fedor@maryland.gov

**Donna Hill, Administrative Assistant**

Phone: 410-841-5987, Donna.hill@maryland.gov

**Mark Powell, Chief of Marketing**

Phone: 410-841-5775, Mark.powell@maryland.gov

**Stone Slade, Agricultural Marketing Specialist – Maryland’s Best**

Phone: 410-841-5779, Stone.slade@maryland.gov

**Weida Stoecker, Agriculture Education Coordinator and Agriculture Outreach**

Phone: 410-841-5789, Weida.stoecker@maryland.gov

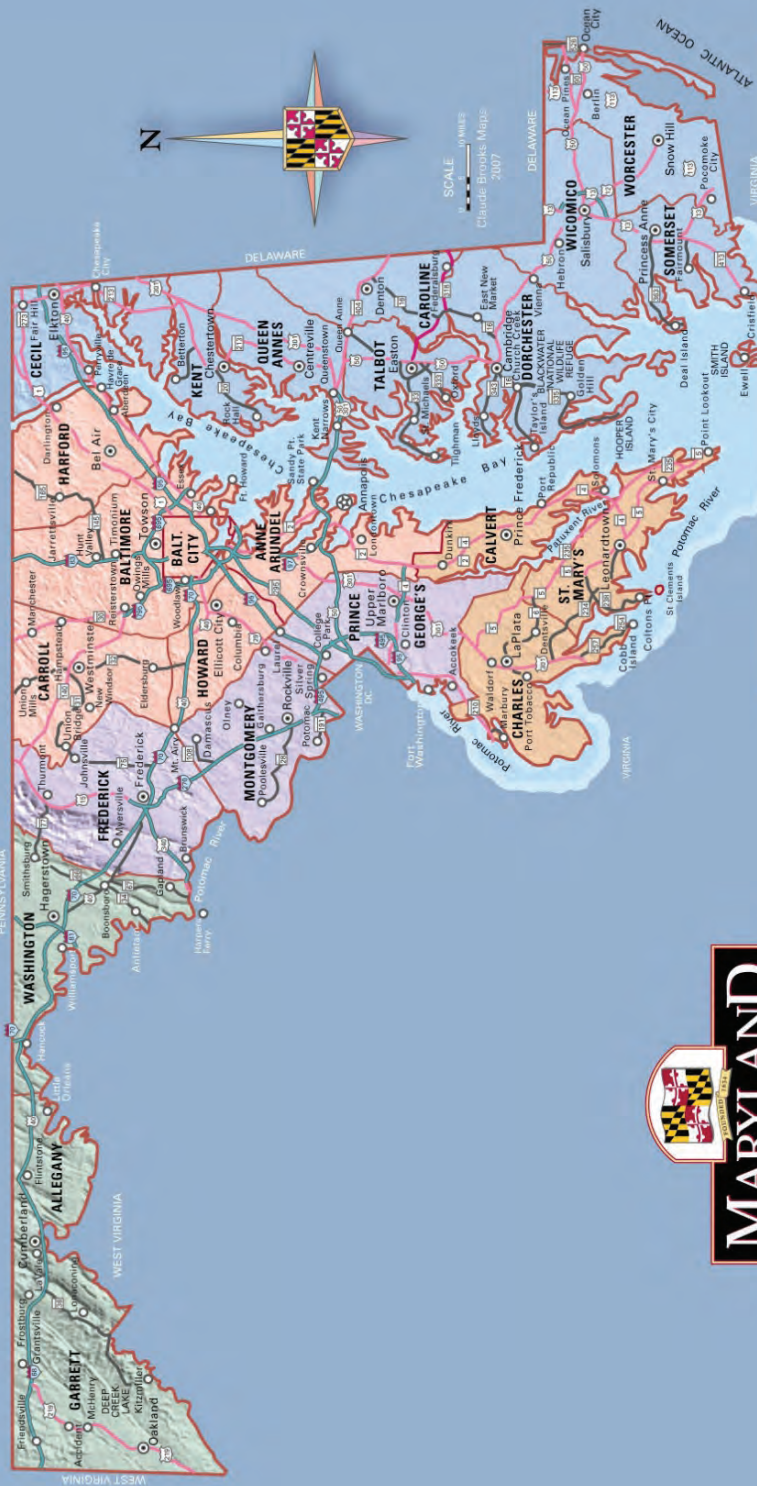
**Kay-Megan Washington, Program Administrator, Ag Conflict Resolution Service (ACReS)**

Phone: 410-841-5778, Kay-megan.washington1@Maryland.gov

**Logan Yearsley, Agricultural Marketing Specialist - Crop Insurance**

Phone: 410-841-5785, Logan.yearsley@maryland.gov





SCALE  
10 MILES  
Claude Brooks Maps  
2007

**KEY**

This map is only intended to be a general representation of the State. For a comprehensive map, consult the *Maryland Official Highway Map* published by the Maryland State Highway Administration.

**REGIONS OF MARYLAND**

- Western
- Capital
- Central
- Southern
- Eastern Shore

Interstate Highway  
 US Highway  
 State Highway



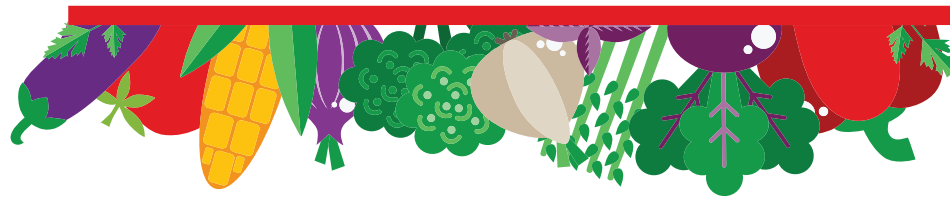
*Welcome*





# PRODUCT LIST

## A listing of typical Maryland products



- |                  |                  |                |
|------------------|------------------|----------------|
| Apples           | Edamame Soybeans | Persimmons     |
| Apricots         | Eggplant         | Plums          |
| Arugula          | Endive           | Potatoes       |
| Asian Pears      | Grapes           | Radishes       |
| Asparagus        | Green Beans      | Raspberries    |
| Beets            | Green Onions     | Rhubarb        |
| Blackberries     | Green Peppers    | Rutabagas      |
| Blueberries      | Hot Peppers      | Salad Greens   |
| Bok Choy         | Kale             | Shallots       |
| Boysenberries    | Leeks            | Spinach        |
| Broccoli         | Lettuce          | Sprouts        |
| Brussels Sprouts | Lima Beans       | Squash         |
| Cabbage          | Melons           | Strawberries   |
| Cantaloupes      | Mushrooms        | Sweet Corn     |
| Carrots          | Mustard Greens   | Sweet Peppers  |
| Cauliflower      | Nectarines       | Sweet Potatoes |
| Celery           | Okra             | Swiss Chard    |
| Cherries         | Onions           | Tomatillos     |
| Collards         | Parsnips         | Tomatoes       |
| Cucumbers        | Peaches          | Turnips        |
| Currants         | Pears            | Watermelons    |
| Daikon           | Peas             | Zucchini       |

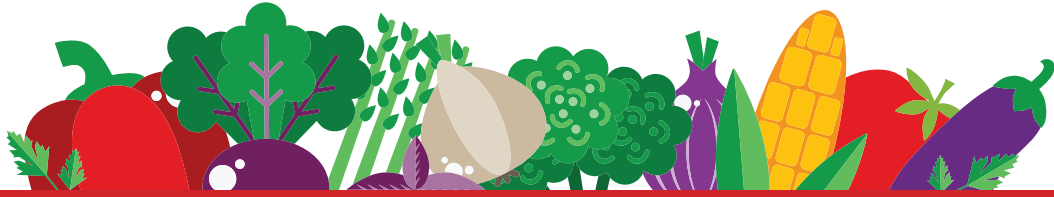


# FRUITS IN SEASON

	JAN	FEB	MAR	APR	MAY	JUN	JUL	AUG	SEP	OCT	NOV	DEC
Apples	●	●	●					●	●	●	●	●
Apricots						●	●					
Asian Pears								●	●	●		
Blackberries							●	●	●			
Blueberries						●	●	●				
Cantaloupes							●	●	●			
Cherries						●	●					
Grapes								●	●			
Honeydew							●	●	●			
Nectarines							●	●				
Peaches							●	●	●			
Pears								●	●	●		
Plums							●	●	●			
Raspberries						●	●	●	●	●		
Strawberries					●	●						
Watermelon							●	●	●			

● Product is harvest

● Product is available either through storage or green house production



# VEGETABLES IN SEASON

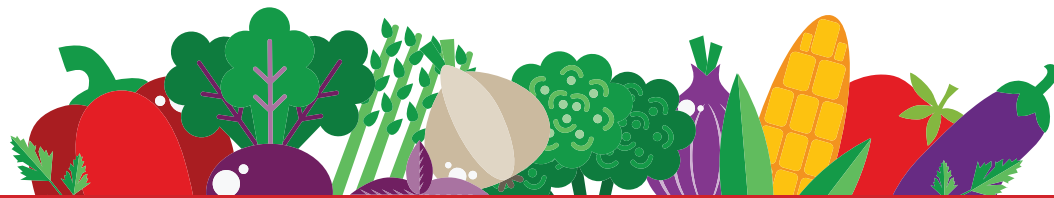
	JAN	FEB	MAR	APR	MAY	JUN	JUL	AUG	SEP	OCT	NOV	DEC
Asparagus				●	●	●						
Beans, Green/ Snap						●	●	●	●			
Beans, Lima							●	●	●			
Beets							●	●	●			
Broccoli					●	●				●	●	
Brussel Sprouts									●	●	●	
Cabbage						●	●		●	●		
Carrots							●	●	●	●		
Cauliflower					●	●			●	●	●	
Chard						●	●		●	●	●	
Collards						●	●	●	●	●	●	
Corn						●	●	●	●	●		
Cucumbers	●	●	●	●	●	●	●	●	●	●	●	●
Eggplant							●	●	●	●		
Herbs					●	●	●	●	●	●		
Garlic						●	●	●	●	●		
Kale					●	●	●	●	●	●	●	
Lettuces	●	●	●	●	●	●	●	●	●	●	●	●
Mushrooms	●	●	●	●	●	●	●	●	●	●	●	●
Okra						●	●	●	●	●		
Onions					●	●	●	●	●	●	●	
Peas						●	●	●	●	●		
Peas, Black-eye							●	●				
Peppers							●	●	●	●		
Radishes					●	●			●	●	●	
Potatoes						●	●	●	●	●		
Pumpkins									●	●	●	
Soybeans, Edaname									●	●	●	
Spinach					●	●			●	●	●	
Squash, Summer						●	●	●	●	●		
Squash, Winter								●	●	●	●	
Sweet Potatoes									●	●	●	●
Turnips					●	●			●	●	●	
Tomatoes	●	●	●	●	●	●	●	●	●	●	●	●

● Product is harvest  
 ● Product is available either through storage or green house production



## TRANSLATION CHART PECKS TO POUNDS

Commodity	Unit	Approximate Net Weight	
		U.S. Pounds	Metric Kilograms
Apples	bushel	48	21.8
	loose pack	38-42	17.2-19.1
	tray pack	40-45	18.1-19.1
	cell pack	37-41	16.8-18.6
Asparagus	crate	30	13.6
Beans	bushel	56-60	25.4-27.2
Blackberries	12, 1/2-pint basket	6	2.7
Broccoli	wirebound crate	20-25	9.1-11.3
Brussels sprouts	ctn, loose pack	25	11.3
Butter	block	55,68	25,30.9
	open mesh bag	50	22.7
Cabbage	flat crate (1 3/4 bu)	50-60	22.7-27.2
	ctn, place pack	53	24
Cantaloupes	crate	40	18.1
Carrots	film plastic bags, mesh sacks, and cartons holding 48 1lb. film bags	55	24.9
Cauliflower	WGA crate	50-60	22.7-27.2
Celery	crate	60	27.2
Cherries	lug	20	9.1
Corn	wirebound crate	50	22.7
	ctn, packed 5oz ears	50	22.7
Cucumber	bushel	48	21.8
Eggplant	bushel	33	15
Eggs	average size, case, 30 doz.	47	21.3
Garlic	ctn of 12 cubes or 12 film bag pkgs, 12 cloves each	10	4.5
Grapes	Eastern, 12-qt basket	20	9.1
	Western, lug	28	12.7
	Western, 4-basket crate	20	9.1
Honey	gallon	11.84	5.4
Honeydew melons	2/3 ctn	28-32	12.7-14.5



## TRANSLATION CHART PECKS TO POUNDS

Commodity	Unit	Approximate Net Weight	
		U.S. Pounds	Metric Kilograms
Kale	ctn or crate	25	11.3
Lettuce	carton packed, 24	43-52	19.5-23.6
Lettuce, greenhouse	24-qt basket	10	4.5
Milk	gallon	8.6	3.9
Onions	dry, sack	50	22.7
	green, bunched, ctn 12-doz.	10-16	4.5-7.3
Peaches	bushel	48	21.8
	2 layer ctn or lug	22	10
	3/4-bu, ctn crate	38	17.2
Pears	bushel	50	22.7
Peas	unshelled, bushel	28-30	12.7-13.6
Peppers	bushel	25-30	11.3-13.6
Plums	ctn or lug	28	12.7
	1/2-bu basket	30	13.6
Potatoes	bushel	60	27.2
	barrel	165	74.8
	box	50	22.7
Raspberries	1/2-pt baskets	6	2.7
Spinach	bushel	18-20	8.2-9.1
Strawberries	24-qt crate	36	16.3
	12-qt crate	28-32	12.7-14.5
Sweet potatoes	bushel	55	24.9
	crate	50	22.7
Tomatoes	crate	60	22.7
	lug box	32	14.5
	2-layer flat	21	9.5
Tomatoes, greenhouse	12-qt basket	20	9.1
Turnips	without tops, mesh sack	22.7	
	bunched, crate	70-80	31.8-36.3
Watermelons	melons of average or medium size	25	11.3

## **GAP/GHP Certification and the FSMA Produce Safety Rule**

The Maryland Department of Agriculture (MDA) offers two GAP and GHP certification programs for fruit and vegetable producers and packers. The goal of both GAPs and GHPs is to reduce the risk of microbial contamination of fresh fruits and vegetables. The current standards are based on the Food and Drug Administration's Guidance to Industry and are in the process of being revised to incorporate the Food Safety Modernization Act Produce Safety Rule requirements. MDA has entered into a cooperative agreement with FDA to develop a Maryland Produce Safety Program that provides outreach, education, technical assistance, inspection and enforcement equivalent to the requirements of the FSMA Produce Safety Rule. There is no way to guarantee that everything we grow and consume is free of microbial contamination, however, the risk can be reduced if preventative steps are taken during production, harvest and packing of fresh fruits and vegetables on the farm and in packing houses.

Food Safety Modernization Act Produce Safety Rule: MDA, the University of Maryland Plant Sciences Department and University of Maryland Extension are currently offering FSMA Produce Rule training with an FDA approved curricula, outreach and technical assistance to Maryland produce growers to facilitate compliance with the Rule. By the FDA established compliance dates, MDA will be conducting inspection and enforcement activities to ensure Maryland produce growers are compliant with the Rule.

USDA GAP Certified and USDA Harmonized GAP Certified: To meet the requirements of buyers for GAP certification, the farm or business must complete a successful audit of its operation conducted by MDA's Food Quality Assurance Program to determine compliance with Good Agricultural Practices and/or Good Handling Practices. The program is conducted through a cooperative agreement with USDA Agricultural Marketing Service. Successful completion of the audit and certification by USDA provides national recognition for producers to the many buyers now requiring audits for compliance to the GAP guidelines.

MDA State GAP: MDA's Food Quality Assurance Program also offers a Maryland GAP certification program geared towards producers that are direct marketers, selling to retailers that accept the MDA GAP certification and/or those producers that are working towards USDA certification. Producers must attend approved food safety training and successfully complete an audit to become MDA GAP certified. Funding for this program is provided through a Specialty Crop grant from USDA and is offered to producers at no cost.

### **COST-SHARE PROGRAM FOR USDA COMPLIANCE AUDITS**

As an incentive for more farmers and packers to participate, the MDA has a cost-share program to help with the certification costs. To be eligible for funding, a producer/handler's USDA GAP/GHP or Harmonized audit must be approved and payment of audit fees verified. USDA GAP/GHP and Harmonized audits are offered through the MDA's Food Quality Assurance Program through a cooperative agreement with the USDA Agricultural Marketing Service.

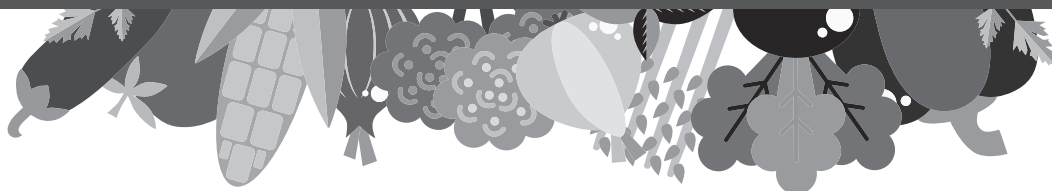
For questions on the above programs, please contact: Deanna Baldwin, Food Quality Assurance Program  
410-841-5769 or [Deanna.baldwin@maryland.gov](mailto:Deanna.baldwin@maryland.gov)



# PRODUCERS

## Growers, Food Producers and Watermen

5 A DAY CSA	Fiore Winery & Distillery	Natures Garlic Farm
Apex Bee Company	Fox Meadow Produce, LLC	Nice Farms Creamery LLC
BARNOLA	Free Range Eggs	Oksana's Produce farm
Bartenfelder farms	FreshPaper	Old Line Custom Meats / Roseda Farm
Baywater Greens, LLC	Grand View Farm	Orchid Cellar Meadery and Winery
Blades Orchard	Gunpowder Bison & Trading Co.	Potomac Sprout Company
Bramble Blossoms	HEX Ferments	Rise Up Coffee Roasters
Cabin Creek Heritage Farm and Ice Kitchen	Hollywood Oyster Company	Salazon Chocolate Co.
Caprikorn Farms	Homestead Farms, Inc	Schrolls Gourmet Foods, Inc
CASCO Distributors Inc/ DBA Nuts to you	Hummingbird Farms, Inc.	Shlagel Farms
Chesapeake Farm to Table	Koinonia Farm	Somerset Bay Foods
Chesapeake Greenhouse, LLC	Land's End Farm	South Mountain Creamery
Chesapeake Harvest	Liberty Delight Farms	Stoecker Farms
Chouquette Chocolates	Loveville Produce Auction	Strohmer's Farm
Coastal Growers	Madhouse Oysters, LLC	The Sweet Farm
Congressional Seafood Co.	Maple Lawn Turkey Farm	Two Oceans True Foods, Inc.
Cornerstone Farms Inc. (t/a Wrights Market)	MeatCrafters	WOMSAUCE, LLC
Cottingham Farm	Milkhouse Brewery at Stillpoint Farm	Zekiah Farms
Dough Run	Miller Farms	Zivaara Chocolatier
Dress It Up Dressing	Mobtown Fermentation	
Edrich Farms	Mother Smucker, LLC	
FireFly Farms		



## 5 A DAY CSA

Vicki Reese, CEO  
 12005 Old Baltimore Pike, Beltsville, MD 20705  
 Prince George's County  
 (301) 595-0379  
 vreesee@5adaycsa.com  
 www.5adaycsa.com

**Business Description:** 5 A DAY CSA is a local and woman-owned source of nutrition and wellness information offering a variety of familiar and unique specialty and ethnic crops from around the globe. Based in Beltsville, we use sustainable agriculture practices that include water and soil conservation, solar energy and soil enrichment. From avuvo to zucchini, we grow vegetables and fruit for your customers from all parts of the world.

**Desired Markets:** Grocery Chains, Institutions (Hospitals, Schools, etc.), Restaurants

**Products Available:** Apples, Arugula, Asian Pears, Asparagus, Beets, Blackberries, Blueberries, Bok Choy, Broccoli, Brussels Sprouts, Cabbage, Carrots, Cauliflower, Celery, Cherries, Collards, Cucumbers, Daikon, Edamame Soybeans, Eggplant, Endive, Figs, Garlic, Green Beans, Green Onions, Green Peppers, Hot Peppers, Kale, Leeks, Lettuce, Lima Beans, Melons, Mustard Greens, Nectarines, Okra, Onions, Pears, Peas, Persimmons, Plums, Potatoes, Radishes, Raspberries, Rhubarb, Rutabagas, Salad Greens, Shallots, Spinach, Squash, Strawberries, Sweet Corn, Sweet Peppers, Sweet Potatoes, Swiss Chard, Tomatoes, Watermelons, Zucchini, Hibiscus, Peanuts, Garden Egg, Sweet Potato, Sweet Potato Leaves, Ground Cherries, Avuvo, Fish Peppers, and other ethnic crops.

## Apex Bee Company

Don John, Apiary Manager  
 P.O. Box 7463, Baltimore, MD 21227  
 Baltimore City  
 (410) 404-1968  
 email@apexbeecompany.com  
 www.apexbeecompany.com

**Business Description:** We are a local apicultural business based in central Maryland specializing in chemical-free beekeeping practices.

**Desired Markets:** Grocery Chains, Institutions (Hospitals, Schools, etc.), Restaurants

**Products Available:** Honey

## BARNOLA

Aisha Thompson, Owner and CEO  
 14101 Dawn Whistle Way, Bowie, MD 20721  
 Prince George's County  
 (301) 357-4022  
 hello@lovebarnola.com  
 www.lovebarnola.com

**Business Description:** BARNOLA specializes in handcrafted organic and all-natural granolas inspired by Caribbean flavors. Each flavor is carefully crafted to create light crunchy savory and traditional granolas. We also support our community through our BARNOLA Books program which aims to support reading in our local schools.

**Desired Markets:** Farm Stands and/or Farmers' Market, Grocery Chains, Restaurants

**Products Available:** Granola

## Bartenfelder Farms

Jessie Harding, Sales  
 4110 Payne Road, Preston, MD 21655  
 Caroline County  
 (410) 913-2590  
 bartfarms9813@yahoo.com

**Business Description:** Our home farm is in Preston Maryland on Payne Road, and we also farm in Hurlock and Cambridge. We grow a wide range of produce from sweet corn and melons to collards and tomatoes. We are family owned and operated and proud to say we are at least the 7th generation produce farmers in our family. We sell at local retail farmers markets and ship wholesale throughout Maryland. Our #1 wholesale items are greens, kale, collards, cabbage, and sweet corn.

**Desired Markets:** Farm Stands and/or Farmers' Market, Grocery Chains, Institutions (Hospitals, Schools, etc.), Restaurants

**Farming Practices:** Conventional

**Food Quality Programs:** MD GAP Certification

**Products Available:** Beets, Broccoli, Collards, Daikon, Kale



---

## Baywater Greens, LLC

Tim Fields, Manager  
 27616 Little Lane, Salisbury, MD 21801  
 Wicomico County  
 (443) 783-4185  
 tim@baywatergreens.com  
 www.baywatergreens.com

**Business Description:** Baywater Greens is a 6th generation family farm growing seasonal and hydroponic produce, including everything from edible flowers to seedless watermelons. In the past few years we have been focusing on heirloom varieties and organic growing practices. We take food safety very seriously and have been GAP-certified by the MDA each year since 2012. Our refrigerated trucks deliver year-round in the Maryland and Washington D.C. areas.

**Desired Markets:** Farm Stands and/or Farmers' Market, Grocery Chains, Institutions (Hospitals, Schools, etc.), Restaurants

**Farming Practices:** Conventional

**Food Quality Programs:** MD GAP Certification

**Products Available:** Arugula, Beets, Bok Choy, Broccoli, Brussels Sprouts, Cabbage, Carrots, Cauliflower, Celery, Collards, Cucumbers, Eggplant, Green Peppers, Hot Peppers, Kale, Lettuce, Salad Greens, Sprouts, Squash, Swiss Chard, Tomatillos, Tomatoes, Watermelons, Zucchini

---

## Blades Orchard

Stephen Blades, Owner  
 4822 Preston Road, Federalsburg, MD 21632  
 Caroline County  
 (410) 829-0334  
 bladesorchard@bladesorchard.com  
 www.bladesorchard.com

**Business Description:** We are a fruit and vegetable farm with a value-added line that includes preserves, butters, honey, and hard cider (Faulkner Branch Cider & Distilling Co., LLC)

**Desired Markets:** Farm Stands and/or Farmers' Market, Grocery Chains, Restaurants

**Food Quality Programs:** MD GAP Certification

**Products Available:** Apples, Apricots, Blackberries, Blueberries, Cabbage, Cantaloupes, Carrots, Cauliflower, Cherries, Collards, Cucumbers, Eggplant, Figs, Garlic, Green Onions, Green Peppers, Hot Peppers, Kale, Lettuce, Melons, Nectarines, Okra, Onions, Peaches, Pears, Plums, Radishes, Spinach, Strawberries, Sweet Peppers, Sweet Potatoes, Swiss Chard, Tomatoes, Turnips, Watermelons, Zucchini

---

## Bramble Blossoms

Robert Bramble, Owner  
 6938 Hubbard Road, Hurlock, MD 21643  
 Dorchester County  
 (410) 310-2748  
 brambleblossoms@comcast.net  
 www.brambleblossoms.com

**Business Description:** Bramble Blossoms is a newly established state-of-the-art hydroponic greenhouse specializing in leafy greens- bibb, red leaf, romaine and spring mix lettuce. GAP-certified. 12 years experience in greenhouse production

**Desired Markets:** Grocery Chains, Institutions (Hospitals, Schools, etc.), Restaurants

**Food Quality Programs:** MD GAP Certification

**Products Available:** Lettuce

## Cabin Creek Heritage Farm and Ice Kitchen

Doug Hill, Owner  
 18235 Claggett Landing Road  
 Upper Marlboro, MD 20774  
 Prince George's County  
 (301) 430-0170  
 farm@cabincreekheritagefarm.com  
 www.cabincreekheritagefarm.com

**Business Description:** We are a local, woodland and pasture-based, sustainable family farm. As 1st generation farmers, we care a lot about our land and how we raise our animals. We raise our animals in their natural environment free of pesticides, without the use of steroids, antibiotics or hormones. In 2016, we added handcrafted, artisan ice pops featuring fresh fruit, herbs, and produce sourced from local farms to bring you a burst of refreshing flavor in every bite!

**Desired Markets:** Farm Stands and/or Farmers' Market, Grocery Chains, Institutions (Hospitals, Schools, etc.), Restaurants

**Farming Practices:** Grass Fed/Pastured

**Food Quality Programs:** Rabbit and Poultry On-Farm Slaughter/Processing Program, Maryland Egg Quality Assurance, USDA Inspection (Beef, Pork, Poultry)

**Products Available:** Beef, Chicken, Lamb, Pork, Rabbit, Turkey, Eggs, Locally sourced dairy, jams/jellies, honey

## Caprikorn Farms

Rhonda Drake, Operations Manager  
 20312 Townsend Road, Gapland MD, 21779  
 Washington County  
 (301) 304-4803  
 kidslovegoatmilk3@gmail.com  
 www.kidslovegoatmilk.com

**Business Description:** At Caprikorn Farms we start with our best-tasting goat milk, from goats allowed to browse as nature intended. This natural diet produces milk of exceptional flavor - perfect for cheese. Our raw goat milk cheese is literally hand made in small batches in the tradition of the best artisanal farmstead cheeses. We are Maryland's first On Farm Home Licenses Goat Cheese Processor.

**Desired Markets:** Farm Stands and/or Farmers' Market, Grocery Chains, Institutions (Hospitals, Schools, etc.), Restaurants

**Farming Practices:** Grass Fed/Pastured

**Products Available:** Cheese

## CASCO Distributors Inc. DBA Nuts to You

Mark Stephenson, President  
 P.O. Box 1102, Salisbury, MD 21802  
 Wicomico County  
 (410) 726-1603  
 mstephenson.jr@gmail.com

**Business Description:** Growers of peanuts and pecans. Producers of Clingers Natural Nut Butter. All natural no added oil or sugar. Sourced from our crop and through co-op of small nut growers (500 acres or less). We offer wholesale of our raw crop and our Clingers Natural Nut Butter brand. We also offer a food service program for restaurants, juice bars and wherever our products fit. Produced on Maryland's eastern shore in Salisbury.

**Desired Markets:** Farm Stands and/or Farmers' Market, Grocery Chains, Institutions (Hospitals, Schools, etc.), Restaurants

**Farming Practices:** Conventional

**Food Quality Programs:** USDA Inspection (Beef, Pork, Poultry)

**Products Available:** Nut butters

## Chesapeake Farm to Table

Beckie Gurley, Owner  
16813 Yeoho Road, Sparks, MD 21152  
Baltimore County  
(410) 205-6152  
chesapeakef2t@gmail.com  
www.chesapeakefarmtotable.com

**Business Description:** Chesapeake Farm to Table is a farmer owned and operated local food hub based in Sparks, Maryland (Baltimore County) connecting a network of 26 small-scale sustainable farmers with customers in our region.

**Desired Markets:** Restaurants

**Farming Practices:** Grass Fed/Pastured, Certified Organic

**Food Quality Programs:** MD GAP Certification, USDA GAP/GHP Certification

**Products Available:** Apples, Arugula, Asian Pears, Asparagus, Beets, Blackberries, Blueberries, Bok Choy, Broccoli, Brussels Sprouts, Cabbage, Cantaloupes, Carrots, Cauliflower, Celery, Cherries, Collards, Cucumbers, Currants, Daikon, Eggplant, Endive, Figs, Garlic, Green Beans, Green Onions, Green Peppers, Horseradish, Hot Peppers, Kale, Leeks, Lettuce, Melons, Mushrooms, Mustard, Greens, Nectarines, Okra, Onions, Parsnips, Peaches, Pears, Peas, Persimmons, Potatoes, Radishes, Raspberries, Rhubarb, Rutabagas, Salad Greens, Shallots, Spinach, Sprouts, Squash, Strawberries, Sweet Peppers, Sweet Potatoes, Swiss Chard, Tomatillos, Tomatoes, Turnips, Watermelons, Zucchini, Beef, Chicken, Pork, Turkey, Cheese, Eggs

## Chesapeake Greenhouse, LLC

John Maniscalco, Owner  
830 Hall Road, Sudlersville, MD 21668  
Queen Anne's County  
(410) 205-2460  
john@wegrowlettuce.com  
www.wegrowlettuce.com

**Business Description:** Farm to table grower of local lettuce, herb and microgreens that are available year round. We have been growing hydroponically since 2008 and offer direct delivery to the Annapolis, Baltimore, & Washington, DC areas.

**Desired Markets:** Farm Stands and/or Farmers' Market, Grocery Chains, Institutions (Hospitals, Schools, etc.), Restaurants

**Products Available:** Arugula, Baby Kale, Baby Red Romaine, Baby Romaine, Baby Spring Mix – 8 lettuce variety Boston Bibb, Frisee, Green Oak Leaf, Lettuce Bouquet Mix – 4 lettuces grown into one full-size head Red Lollo Rosa, Red Oak Leaf, Romaine, Basil, Lime Basil, Thai Basil, Garlic Chives, Mint Oregano, Dill

## Chesapeake Harvest

Andy Andrews, Field Services Coordinator  
101 Marlboro Ave, Ste. 53, Easton, MD 21601  
Talbot County  
(410) 708-6932  
andy@chesapeakeharvest.com  
www.chesapeakeharvest.com

**Business Description:** Chesapeake Harvest offers Bay-friendly, high quality, locally grown produce from the Delmarva region. We work with all types of wholesale buyers such as groceries, distributors, restaurants and institutions in supplying fresh, local produce. Our farmers are committed to the production of the finest quality produce and practice Bay-friendly stewardship in accordance with environmental goals.

**Desired Markets:** Farm Stands and/or Farmers' Market, Grocery Chains, Institutions (Hospitals, Schools, etc.), Restaurants

**Farming Practices:** Conventional, Grass Fed/Pastured, Certified Organic

**Food Quality Programs:** MD GAP Certification, USDA GAP/GHP Certification, USDA Harmonized GAP

**Products Available:** Apples, Arugula, Asparagus, Beets, Blackberries, Blueberries, Bok Choy, Broccoli, Brussels Sprouts, Cantaloupes, Carrots, Cauliflower, Celery, Collards, Cucumbers, Daikon, Eggplant, Garlic, Green Beans, Green Onions, Green Peppers, Hot Peppers, Kale, Leeks, Lettuce, Lima Beans, Melons, Mushrooms, Mustard Greens, Okra, Onions, Parsnips, Peaches, Pears, Peas, Potatoes, Radishes, Raspberries, Rhubarb, Rutabaga, Salad Greens, Shallots, Spinach, Squash, Strawberries, Sweet Corn, Sweet Peppers, Sweet Potatoes, Swiss Chard, Tomatillos, Tomatoes, Turnips, Watermelons, Zucchini

---

## Chouquette Chocolates

Sarah Dwyer, Owner  
 7621 Rickenbacker Dr, Suite 500  
 Gaithersburg, MD 20879  
 Montgomery County  
 (301) 651-4442  
 Sarah@chouquette.us  
 www.chouquette.us

**Business Description:** Sarah Dwyer has been obsessed with chocolate-covered caramels since she first saw a Whitman's Sampler at her grandmother's house. After years in banking, and inspired by a year in Paris pastry school, she started Chouquette to share delicious happiness with the world. Combining European techniques, local ingredients and beautiful designs make Chouquette unique in the chocolate space. It's no surprise that small-batch, chocolate-covered caramels are still our passion. Try one and you'll know why.

**Desired Markets:** Farm Stands and/or Farmers' Market, Grocery Chains, Institutions (Hospitals, Schools, etc.), Restaurants

**Products Available:** Chocolates and Confections

---

## Coastal Growers

Will Hales, Partner  
 1320 Robins Avenue, Salisbury MD, 21804  
 Wicomico County  
 (410) 726-9105  
 will@coastalgrowers.com  
 www.coastalgrowers.com

**Business Description:** Commercial vegetable grower/shipper specializing in seedless watermelons. Grocery Chains

**Farming Practices:** Conventional

**Food Quality Programs:** USDA Harmonized GAP

**Desired Markets:** Grocery Chains

**Products Available:** Strawberries, Tomatoes, Watermelons

---

## Congressional Seafood Co.

Kelly Morris, Director of Marketing  
 7775 Chesapeake Bay Court, Jessup, MD 20794  
 Howard County  
 (410) 799-8626  
 ksm@congressionalseafood.com  
 www.congressionalseafood.com

**Business Description:** Seafood distributor and wild blue catfish supplier.

**Desired Markets:** Grocery Chains, Institutions (Hospitals, Schools, etc.), Restaurants

**Products Available:** Wild Fish

---

## Cornerstone Farms Inc. t/a Wrights Market

Charles Wright IV, President  
 9300 Old Railroad RD, Mardela Springs, MD 21837  
 Wicomico County  
 (410) 742-8845  
 charles@wrightsmarket.com  
 www.wrightsmarket.com

**Business Description:** Our farm consists of 800 acres of vegetables, grains, and a retail roadside market. Our vegetable crops of larger acreage include sweet corn, watermelons, pumpkins and processing sweet potatoes. The farm has traditionally-grown vegetable crops for processors and our own retail market needs, along with some wholesale produce. We are currently developing and expanding our wholesale produce business with an emphasis on sweet potatoes and sweet corn.

**Desired Markets:** Grocery Chains, Institutions (Hospitals, Schools, etc.), Restaurants,

**Farming Practices:** Conventional

**Products Available:** Melons, Sweet Corn, Sweet Potatoes, Watermelons

## Cottingham Farm

Cleo Braver, Owner and Head Farmer  
28038 Goldsborough Neck Road, Easton, MD 21601  
(443) 463-1298  
cleo@cottinghamfarm.com  
www.cottinghamfarm.com

**Business Description:** Cottingham Farm grows USDA-certified organic heirloom vegetables and raises pastured, rotationally grazed heritage hogs and layers in Talbot County. We sell our produce and pork to niche whole foods grocers and restaurants which focus on locally and sustainably raised foods, as well as to the public and CSA members. We deliver to our customers in Baltimore, in Washington, and on the Eastern Shore.

**Desired Markets:** Grocery Chains, Restaurants

**Farming Practices:** Grass Fed/Pastured, Certified Organic

**Food Quality Programs:** Maryland Egg Quality Assurance, USDA Inspection (Beef, Pork, Poultry)

**Products Available:** Arugula, Beets, Bok Choy, Broccoli, Brussels Sprouts, Cabbage, Carrots, Cauliflower, Cucumbers, Daikon, Edamame Soybeans, Eggplant, Garlic, Grapes, Green Beans, Green Onions, Hot Peppers, Kale, Mustard Greens, Okra, Radishes, Salad Greens, Spinach, Squash, Sweet Peppers, Sweet Potatoes, Swiss Chard, Tomatoes, Turnips, Zucchini, Pork, Eggs, Herbs-Basil Varieties

## Dough Run

Sarah Sprigg, Owner/Baker  
2510 Pocock Road, Fallston, MD 21047  
Harford County  
(443) 655-0084  
sarah@doughrun.com  
www.doughrun.com

**Business Description:** Granola company specializing in granola bars, clusters (cookies) and loose granola. Many gluten-free, dairy-free and soy-free options. Healthy food that tastes great! Woman-owned company using local Maryland honey from Apex Bee Company. We also have a whole wheat pancake mix with fresh ground wheat.

**Desired Markets:** Farm Stands and/or Farmers' Market, Grocery Chains, Institutions (Hospitals, Schools, etc.), Restaurants

**Products Available:** Granola, Granola Bars Clusters (granola cookies), Pancake Mix

## Dress It Up Dressing

Sophia Maroon, CEO  
5512 Greystone Street, Chevy Chase MD, 20815  
Montgomery County  
(301) 979-9555  
Sophia@dressitupdressing.com  
www.dressitupdressing.com

**Business Description:** Despite hundreds of options in the salad dressing aisle, none of the products offered resemble a dressing made from scratch. Dress It Up Dressing keeps it simple: we use recognizable ingredients to create a unique product that offers convenience without sacrificing quality.

**Desired Markets:** Grocery Chains, Institutions (Hospitals, Schools, etc.), Restaurants

**Products Available:** Salad dressings in retail and food-service sizes.

## Edrich Farms

Edward Stanfield, President  
2829 Offutt Road, Randallstown, MD 21133  
Baltimore County  
(410) 922-6523  
amy.annable@edrichlum.net

**Business Description:** We offer organic, hydroponically grown sprouts, including broccoli sprouts, alfalfa sprouts, sunflower sprouts and wheat grass.

**Desired Markets:** Chains, Institutions (Hospitals, Schools, etc.), Restaurants

**Farming Practices:** Certified Organic

**Products Available:** Sprouts, Sweet Corn

---

## Fiore Winery & Distillery

Anthony Fiore, Owner  
 3026 Whiteford Road, Pylesville, MD 21132  
 Harford County County  
 (410) 879-4007  
 tony.fiore@fiorewinery.com  
 www.fiorewinery.com

**Business Description:** Small family owned and operated winery and distillery located in rural Harford County, MD.

**Desired Markets:** Farm Stands and/or Farmers' Market, Grocery Chains, Restaurants

**Products Available:** Grapes, Wine and Spirits

---

## FireFly Farms

Pablo Solanet, Owner  
 107 S. Main Street, P.O. Box 257, Accident MD, 21520  
 Garrett County  
 (202) 297-5559  
 pablo@fireflyfarms.com  
 www.fireflyfarms.com

**Business Description:** Founded in 2000 by partners Mike Koch & Pablo Solanet, FireFly Farms now comprises of a community of cheese makers and cheese mongers dedicated to making excellent cheese, creating value for the regional farming community and the rural economy of western Maryland's Garrett County, and ensuring that its operations are sustainable and protect our natural environment for future generations. Maryland's premier and most-awarded cheese maker, FireFly Farms is a proud member of the Maryland Cheese Guild and the American Cheese Society.

**Desired Markets:** Farm Stands and/or Farmers' Market, Grocery Chains, Restaurants

**Farming Practices:** Grass Fed/Pastured

**Products Available:** Cheese

---

## Fox Meadow Produce, LLC

Alex Spies, Owner  
 11138 Three Bridge Branch Rd, Cordova, MD 21625  
 Talbot County  
 (443) 786-2315  
 dalexspies@gmail.com  
 www.foxmeadowproduce.com

**Business Description:** Farm with greenhouse producing Long English cucumbers. The farm also has Black Angus beef sold by the half and quarter. Fox Meadow Produce also shares property with Triple Creek Winery.

**Desired Markets:** Farm Stands and/or Farmers' Market, Grocery Chains, Institutions (Hospitals, Schools, etc.), Restaurants, MD GAP Certification

**Products Available:** Cucumbers, Beef

---

## Free Range Eggs

Harry Dalton, Farmer  
 24556 McIntosh RD, Hollywood MD, 20636  
 St. Mary's County  
 (301) 475-8224  
 bee2charmer@gmail.com

**Business Description:** We offer free range brown eggs.

**Food Quality Programs:** Maryland Egg Quality Assurance

**Products Available:** Eggs

---

## FreshPaper

Carrie Murphy, Manager  
 P.O. Box 880, Columbia, MD 21044  
 Howard County  
 (424) 260-3368  
 hello@fenugreen.com  
 www.fenugreen.com

**Business Description:** Fenugreen FreshPaper helps consumers, retailers and farmers reduce food waste, naturally. Infused with organic spices, one FreshPaper sheet can be simply placed into fridge drawers, bags, cartons, and shipping containers to keep fruits and vegetables fresh for up to 2-4x longer. Recyclable, biodegradable and compostable, patented and award-winning FreshPaper has been featured by the New York Times, The Washington Post, the Today Show, Oprah, and Forbes since launching at a farmer's market.

**Desired Markets:** Farm Stands and/or Farmers' Market, Grocery Chains, Institutions (Hospitals, Schools, etc.), Restaurants

**Farming Practices:** Certified Organic

**Products Available:** Specialty Paper

---

---

## Grand View Farm

Nick Bailey, Farmer  
 1939 High Point Road, Forest Hill, MD 21050  
 Harford County  
 (410) 937-2221  
 nick@grandviewfarming.com  
 www.grandviewfarming.com

**Business Description:** We are a multi-species, pasture-based family farm producing 100% grass fed beef, GMO-free, pasture-raised pork and GMO-free pastured poultry and eggs. We take a holistic approach to raising animals by implementing intensive pasture management, daily animal rotations and pasture species stacking. Our customers include over 200 families that visit the farm and on-farm store, Baltimore area butcher shops, area restaurants, as well as regional “farmers market home delivery” services and other retail outlets.

**Desired Markets:** Grocery Chains, Institutions (Hospitals, Schools, etc.), Restaurants

**Farming Practices:** Grass Fed/Pastured, Rabbit and Poultry On-Farm Slaughter/Processing Program, Maryland Egg Quality Assurance, USDA Inspection (Beef, Pork, Poultry)

**Products Available:** Beef, Chicken, Pork, Turkey, Eggs

---

## Gunpowder Bison & Trading Co.

Robin Troy, Wholesale Manager  
 1270 Monkton Road, Monkton, MD 21111  
 Baltimore County  
 (443) 933-0468  
 robin@gunpowderbison.com  
 www.gunpowderbison.com

**Business Description:** As a family owned and operated farm, Gunpowder Bison raises all natural bison, with no hormones or antibiotics. All processing is done under USDA inspection. Our products can be purchased at our store in Monkton, Maryland or through our on-line store. You will also find our bison meat on the menus of restaurants throughout the mid-Atlantic region, and on shelves of regional grocery stores.

**Desired Markets:** Restaurants

**Farming Practices:** Grass Fed/Pastured

**Food Quality Programs:** USDA Inspection (Beef, Pork, Poultry)

**Products Available:** Bison

---



---

## HEX Ferments

Meaghan Carpenter, Co-owner  
 529 E Belvedere Ave, Baltimore, MD 21218  
 Baltimore County  
 (410) 775-5044  
 hex@hexferments.com  
 www.hexferments.com

**Business Description:** HEX Ferments uses the traditional method of fermentation to preserve and transform local, organic produce into nourishing foods – presently unique sauerkrauts, kimchi, seasonal ferments, and kombucha tea. Fermented foods for thousands of years have been an effective way to preserve the harvest and make foods more digestible while detoxifying and enhancing nutrients. The effect of fermentation makes flavors more complex, while adding naturally occurring probiotics to your diet.

**Desired Markets:** Farm Stands and/or Farmers’ Market, Grocery Chains, Restaurants

**Products Available:** Beets, Carrots, Celery, Daikon, Garlic, Green Onions, Hot Peppers, Onions, Radishes, Sweet Peppers, Unique Sauerkrauts, Kimchi, Seasonal Ferments, and Kombucha Tea

---

## Hollywood Oyster Company

Tal Petty, Member  
 P.O. Box 69, Hollywood, MD 20636  
 St. Mary’s County  
 (301) 710-6396  
 tal@hollywoodoyster.com  
 www.hollywoodoyster.com

**Business Description:** Oyster farm; grower of Hollywood and Sweet Jesus Oysters

**Products Available:** Oysters

---

## Homestead Farms, Inc.

Alison Howard, Owner  
 2250 Millington Road, Millington, MD 21651  
 Queen Anne's County  
 (410) 490-7038  
 alisonphoward@gmail.com  
 www.freshorganicvegetables.com

**Business Description:** Homestead Farms, Inc., a USDA-Certified Organic, Harmonized GAP vegetable farm on Maryland's Eastern Shore, specializes in wholesale production and marketing of green cabbage, curly kale, yellow squash, zucchini and seedless watermelon. We also meet market demand for custom growing and packing for CSA businesses, buying clubs and retail produce markets.

**Desired Markets:** Farm Stands and/or Farmers' Market, Grocery Chains, Institutions (Hospitals, Schools, etc.), Restaurants

**Farming Practices:** Certified Organic

**Food Quality Programs:** USDA Harmonized GAP

**Products Available:** Arugula, Beets, Bok Choy, Broccoli, Brussels Sprouts, Cabbage, Cantaloupes, Carrots, Cauliflower, Celery, Collards, Cucumbers, Daikon, Eggplant, Garlic, Green Beans, Green Onions, Green Peppers, Hot Peppers, Kale, Leeks, Lettuce, Melons, Mushrooms, Mustard Greens, Onions, Potatoes, Radishes, Rutabagas, Salad Greens, Spinach, Squash, Sweet Corn, Sweet Peppers, Sweet Potatoes, Tomatillos, Tomatoes, Turnips, Watermelons, Zucchini

## Hummingbird Farms, Inc.

Rick Sturmer, Sales  
 12319 Ridgely Road, Ridgely, MD 21660  
 Caroline County  
 (410) 634-2121  
 hbird@crosslink.net  
 www.facebook.com/HUMMINGBIRDFARMS.official

**Business Description:** Hummingbird Farms grows two crops of off-season production, October to January and March to July, delivering up to eleven tons a week to supermarkets and gourmet stores. We have evolved a strategy that helps us stand up against the competition. Since for most consumers, the most important quality is taste and size, we grow plenty of beefsteak tomatoes. But we also have expanded into other varieties, like heirloom, cherry, and red, yellow, and orange clusters. Our typical customer looks for us because we are picking the tomatoes at peak when red and ripe with flavor.

**Desired Markets:** Farm Stands and/or Farmers' Market, Grocery Chains, Institutions (Hospitals, Schools, etc.), Restaurants

**Farming Practices:** Conventional

**Food Quality Programs:** USDA Harmonized GAP

**Products Available:** Tomatoes, Beefsteak Tomatoes; Red, Yellow, Orange, Red Plum & Golden Plum Cluster Tomatoes; Red, Yellow & Orange Cherry, Red & Yellow Grape, & Miniature Plum Tomatoes; Heirloom Tomatoes

## Koinonia Farm

Raina Gover, Farm Manager  
 1400 Greenspring Valley Road, Stevenson, MD 21153  
 Baltimore County  
 (410) 486-2405  
 koinoniaorganicfarm@yahoo.com

**Business Description:** Farm offering wholesale organic culinary herbs.

**Desired Markets:** Grocery Chains, Institutions (Hospitals, Schools, etc.), Restaurants

**Farming Practices:** Certified Organic

**Food Quality Programs:** USDA Harmonized GAP

**Products Available:** Culinary Herbs



## Land's End Farm

Vinton Lawrence, Owner  
23629 Land's End Road, Chestertown, MD 21620  
Kent County  
(410) 778-1866  
vlawrence@nets.com

**Business Description:** Land's End Farm is an MDA-certified, organic farm located in Chestertown, MD. Our principal field crops are corn, soybeans, alfalfa hay, grass hay, wheat, rye, and barley. We produce value-added, heritage grain products – flour, polenta, and cornmeal – and also sell food-grade, whole grain to distillers and brewers. We provide flour and polenta to restaurants and artisanal bakeries. We custom grind to order. We are interested in establishing relationships with local restaurants, bakers, brewers, distilleries and others to grow custom crops of grains, vegetables, and small fruits.

**Desired Markets:** Restaurants

**Farming Practices:** Grass Fed/Pastured, Certified Organic

**Products Available:** Asparagus, Currants, Figs, Sweet Potatoes, Beef, Fresh ginger, Asian medicinal herbs, food-grade, heritage varieties of whole grains ( Redeemer wheat, Abruzzi rye, Floriana Valsugana polenta corn, Hickory King white corn and meal, hullless barley), We can custom stone grind small grains to grits, polenta, flour. We are certified for on-farm, organic processing by MD Dept. of Health. We also grow black walnuts and pecans in small quantities and can custom grow a wide variety of organic vegetables and small fruits.

## Liberty Delight Farms

Shane Hughes, Owner  
1633 Oakland Road, Reisterstown, MD 21136  
Baltimore County  
(443) 226-5634  
shane@libertydelightfarms.com  
www.libertydelightfarms.com

**Business Description:** All natural meat producer, Angus/simmental beef, Berkshire pork, poultry and rabbit.

**Desired Markets:** Institutions (Hospitals, Schools, etc.), Restaurants

**Farming Practices:** Grass Fed/Pastured

**Food Quality Programs:** Rabbit and Poultry On-Farm Slaughter/Processing Program, Maryland Egg Quality Assurance, USDA Inspection (Beef, Pork, Poultry)

**Products Available:** Beef, Chicken, Lamb, Rabbit, Turkey, Eggs

## Loveville Produce Auction

Ivan Winger, President  
40454 Bishop Road, Loveville, MD 20656  
St. Mary's County  
(240) 538-2005  
Donna.sasscer@stmarysmd.com  
www.stmarysmd.com

**Business Description:** The Loveville Produce Auction sells fresh fruits and vegetables that are picked daily. The Auction is open three days a week during the peak season and specializes in bedding plants, cut flowers, and hanging baskets. There is an annual spring craft auction and a Fall Pumpkins Galore Auction. Firewood and hay are also sold in the fall and spring. The Auction also features a small-lot auction that appeals to smaller buyers and homeowners.

**Desired Markets:** Farm Stands and/or Farmers' Market, Grocery Chains, Institutions (Hospitals, Schools, etc.), Restaurants

**Farming Practices:** Conventional, Organic Exempt

**Products Available:** Apples, Arugula, Asian Pears, Asparagus, Beets, Blackberries, Blueberries, Bok Choy, Broccoli, Brussels Sprouts, Cabbage, Cantaloupes, Carrots, Cauliflower, Cherries, Collards, Cucumbers, Eggplant, Endive, Figs, Garlic, Grapes, Green Beans, Green Onions, Green Peppers, Horseradish, Hot Peppers, Kale, Leeks, Lettuce, Lima Beans, Melons, Mushrooms, Mustard Greens, Onions, Parsnips, Peaches, Pears, Peas, Plums, Potatoes, Radishes, Raspberries, Rhubarb, Rutabagas, Salad Greens, Shallots, Spinach, Squash, Strawberries, Sweet Corn, Sweet Peppers, Sweet Potatoes, Swiss Chard, Tomatillos, Tomatoes, Turnips, Watermelons, Zucchini, Eggs, Hay and Firewood, Handmade Crafts, Cut Flowers, Bedding Plants and Hanging Baskets.

---

## Madhouse Oysters, LLC

Ted Cooney, Founder  
 2405 Hoopers Island Road, P.O. Box 181  
 Fishing Creek, MD 21634  
 Dorchester County  
 (410) 310-4132  
 ted@madhouseoysters.com  
 www.madhouseoysters.com

**Business Description:** We are an oyster aquaculture operation selling to wholesale and retail customers. Available Monday through Friday, 12 months a year. Oyster farming is a totally organic endeavor with no food or chemical inputs to sustain and grow the oysters. The only outcomes from farm activities are the oysters and a cleaner, more naturally healthy and diverse environment surrounding the farm.

**Products Available:** Oysters

---

## Maple Lawn Turkey Farm

BJ Radhe, Operations  
 11788 Scaggsville Road, Fulton, MD 20759  
 Howard County  
 (301) 725-2074  
 bj.radhe@gmail.com  
 www.maplelawn.com

**Business Description:** Farm offering fresh, free-range, all-natural turkeys

**Desired Markets:** Grocery Chains, Restaurants

**Farming Practices:** Grass Fed/Pastured

**Food Quality Programs:** MD GAP Certification, Rabbit and Poultry On-Farm Slaughter/Processing Program

**Products Available:** Turkey

---

## MeatCrafters

Mitch Berliner, Owner  
 7902 Turncrest Drive, Potomac, MD 20854  
 Montgomery County  
 (301) 440-8496  
 berlinermp@gmail.com  
 www.meatcrafters.com

**Business Description:** We are the only USDA facility making traditional cured salamis, Skinny Salamis, duck breast prosciutto and 50 different kinds of unique sausages. We also custom make sausages for local farmers.

**Food Quality Programs:** USDA Inspection (Beef, Pork, Poultry)

**Products Available:** All Meats

---

## Milkhouse Brewery at Stillpoint Farm

Tom Barse, Owner  
 8253 Dollyhyde Road, Mt. Airy, MD 21771  
 Frederick County  
 (301) 829-6950  
 tom@milkhousebrewery.com  
 www.milkhousebrewery.com

**Business Description:** Milkhouse Brewery is Maryland's first farm brewery. We handcraft quality beer using as many locally sourced products as possible, including hops grown here on our farm. Our goal is to produce a 100% Maryland beer! Our products are available (through self-distribution) in many fine restaurants and bottle shops, farm markets, and in our on-site tasting room. In addition to beer we also raise critically endangered Leicester Longwool sheep for fleece, wool products, breeding stock, and a limited number of market lambs.

**Desired Markets:** Farm Stands and/or Farmers' Market, Restaurants

**Farming Practices:** Grass Fed/Pastured

**Products Available:** Handcrafted Beer, Raw Wool, Fleece and Yarn

## Miller Farms

Brad Miller, Farmer  
 10140 Piscataway Road, Clinton, MD 20735  
 Prince George's County  
 (301) 297-9370  
 bpmiller14@gmail.com  
 www.millerfarmsclinton.com

**Business Description:** Miller Farms is a 267-acre farm located in Prince George's County, Maryland, that has been family owned and operated since 1840. We grow a wide array of fresh fruits, crisp vegetables and much more! In addition to our farm, we have a bakery full of delicious home-baked goods and handmade ice cream, and a nursery abundant with beautiful plants and flowers.

**Desired Markets:** Grocery Chains, Institutions (Hospitals, Schools, etc.), Restaurants

**Farming Practices:** Conventional

**Food Quality Programs:** MD GAP Certification

**Products Available:** Apples, Asparagus, Beets, Blackberries, Blueberries, Broccoli, Cabbage, Cantaloupes, Carrots, Cauliflower, Cherries, Collards, Cucumbers, Eggplant, Green Beans, Green Onions, Green Peppers, Hot Peppers, Kale, Melons, Mushrooms, Mustard Greens, Nectarines, Okra, Onions, Peaches, Plums, Potatoes, Salad Greens, Spinach, Squash, Strawberries, Sweet Corn, Sweet Peppers, Sweet Potatoes, Swiss Chard, Tomatillos, Tomatoes, Turnips, Watermelons, Zucchini, Eggs

## Mobtown Fermentation

Sidharth Sharma, Owner  
 9 W. Aylesbury Road, Suite I  
 Lutherville-Timonium, MD 21093  
 Baltimore County  
 (410) 252-2850  
 mobtownfermentation@gmail.com  
 www.mobtownfermentation.com

**Business Description:** We are the makers of Wild Kombucha. Kombucha is a probiotic health drink made from the fermentation of green tea with a probiotic culture. Wild Kombucha is our urban spin on the beverage. By adding specific ratios of organic juices we are able to flavor the product in a way that curbs the natural vinegar tones. We currently sell to grocery stores, cafes, and yoga studios including Whole Foods, MOM's Organic, and YogaWorks. Our kombucha comes in four flavors: Ginger-Grapefruit, Mango-Peach, Elderberry, and Apple Spice. It is completely vegan, gluten-free, and is made exclusively with organic ingredients.

**Desired Markets:** Grocery Chains, Restaurants

**Products Available:** Ready-to-Drink Health Beverages in Four Flavors: Ginger-Grapefruit, Mango-Peach, Elderberry, and Apple Spice

## Mother Smucker, LLC

Amber Smucker, Owner/Operator  
 4865 Eastern Neck Road, Rock Hall, MD 21661  
 Kent County  
 (484) 368-9274  
 mothersmuckersalsa@gmail.com  
 www.mothersmuckersalsa.com

**Business Description:** We are a salsa and marinara producer on the Eastern Shore of Maryland. Our specialty is producing salsa and marinara from only fresh and local produce. We operate under the On-Farm Processing Kitchen license from the state of Maryland. Currently, we retail in 11 locations across Kent, Queen Anne's, and Cecil counties of Maryland and Rehobeth Beach of Delaware.

**Desired Markets:** Farm Stands and/or Farmers' Market, Grocery Chains, Institutions (Hospitals, Schools, etc.), Restaurants

**Products Available:** Medium Salsa and Marinara Sauce Made From Locally Sourced Ingredients

## Nature's Garlic Farm

James Reinhardt, Owner  
0610 Old Cordova Road, Easton, MD 21601  
Talbot County  
(410) 829-1718  
sales@naturesgarlicfarm.com  
www.naturesgarlicfarm.com

**Business Description:** Growers of gourmet garlic. We pride ourselves on growing large, high quality hardneck garlic bulbs without the use of herbicides or pesticides. We wholesale our garlic bulbs to grocery stores, gourmet markets, produce stands, farmers markets, CSA's, restaurants as well as produce wholesalers. We provide signage and marketing assistance to our retailers and guarantee our product.

**Desired Markets:** Farm Stands and/or Farmers' Market, Grocery Chains, Institutions (Hospitals, Schools, etc.), Restaurants

**Food Quality Programs:** MD GAP Certification, USDA Harmonized GAP

**Products Available:** Garlic, Garlic Scapes

## Nice Farms Creamery, LLC

Bob Miller, Owner  
25786 Auction Road, Federalsburg, MD 21632  
Caroline County  
(410) 829-4456  
nicefarmscreamery@gmail.com  
www.nicefarmscreamery.com

**Business Description:** Grass-based dairy farm that has an on-farm processing facility since 2009. Produces Creamline, Skim, and Chocolate Milks along with a yogurt line and seasonal ice cream and egg nog and butter.

**Desired Markets:** Farm Stands and/or Farmers' Market, Grocery Chains, Restaurants

**Farming Practices:** Grass Fed/Pastured

**Products Available:** Butter, Ice Cream, Milk, Yogurt

## Oksana's Produce Farm

Oksana Bocharova, Owner  
2517 McGinnes Road, Chestertown, MD 21620  
Queen Anne's County  
(410) 487-1925  
oksanaoch89@gmail.com  
www.oksanasproduce.com

**Business Description:** Produce grown using 100 percent organic practices and fermented vegetables such as sauerkrauts, kimchi, chow chow, curried cauliflower, fermented daikon radish and dill pickles. Oksana cultures her own veggies or those she sources locally. She adds herbs, spices, and minimal salt, and uses no sugar or preservatives.

**Desired Markets:** Farm Stands and/or Farmers' Market, Grocery Chains, Institutions (Hospitals, Schools, etc.), Restaurants

**Products Available:** Arugula, Beets, Bok Choy, Daikon, Eggplant, Green Beans, Green Onions, Green Peppers, Hot Peppers, Kale, Lettuce, Mustard Greens, Radishes, Salad Greens, Sprouts, Squash, Strawberries, Sweet Peppers, Sweet Potatoes, Swiss Chard, Tomatoes, Turnips, Watermelons, Zucchini

## Old Line Custom Meats Roseda Farm

Mike Brannon, Vice President  
1600 S. Monroe St., Baltimore, MD 21230  
Baltimore County  
(410) 962-5530  
mike@olcmc.com  
www.rosedabeef.com

**Business Description:** Welcome to Black Angus beef done the right way—the way it was meant to be. Welcome to Roseda Farm. • Locally Raised • All-Natural • No Antibiotics Unless Medically Necessary • No Growth Hormones, Ever • Fed an All-Vegetable Diet • Dry-Aged to Absolute Perfection. Just taste our story!

**Desired Markets:** Grocery Chains, Institutions (Hospitals, Schools, etc.), Restaurants

**Food Quality Programs:** USDA Inspection (Beef, Pork, Poultry)

**Products Available:** Beef

## Orchid Cellar Meadery and Winery

Dan Kennedy, Sales and Marketing Manager  
8546 Pete Wiles Rd., Middletown, MD 21769  
Frederick County  
(301) 473-3568  
dan@orchidcellar.com  
www.orchidcellar.com

**Business Description:** In 2010, we opened our doors in Middletown, MD, offering a small collection of meads and a single red wine. Since then, we've grown into a one-of-a-kind boutique mead and wine producer with an array of products and fans all across the US and beyond. We believe patience is a virtue, at least when it comes to making fermented goodness, and quantity should never trump quality.

**Desired Markets:** Grocery Chains, Restaurants

**Farming Practices:** Conventional

**Products Available:** Grapes, Mead and Wine

## Potomac Sprout Company

Wesley Yu, Sales and Operations  
8202 Blacks Mill Road, Thurmont, MD 21788  
Frederick County  
(240) 483-4891  
wes.yu@potomacsproutcompany.com  
www.potomacsproutcompany.com

**Business Description:** We are an indoor hydroponic farm located in Thurmont, MD, specializing in growing organic green leaf sprouts without soil, using state-of-the-art hydroponic equipment. We use only organic growing methods and prioritize food safety and quality above all else. We grow and harvest our sprouts weekly to ensure our customers receive the freshest products; we also test our facility every week for harmful pathogens.

**Desired Markets:** Farm Stands and/or Farmers' Market, Grocery Chains, Institutions (Hospitals, Schools, etc.), Restaurants

**Farming Practices:** Certified Organic

**Products Available:** Broccoli, Daikon, Kale, Sprouts, Green Leaf Sprouts, Organic Alfalfa Sprouts, Organic Daikon Radish Sprouts, Organic Broccoli Sprouts, Alfalfa Sprouts, Broccoli Sprouts, China Red Radish Sprouts, German Kale Sprouts, Siberian Dwarf Kale Sprouts, Clover Sprouts

## Rise Up Coffee Roasters

Mark Airey, Wholesale Specialist  
618 Dover Road, Easton, MD 21601  
Talbot County  
(410) 822-1353  
mark@riseupcoffee.com  
www.riseupcoffee.com

**Business Description:** Established in 2005, we are an independent, small-batch coffee roaster located in Maryland. Rise Up is 100% dedicated to sustainable coffees (Certified Fair Trade + Organic), and recently received national recognition as Maryland's Best Coffee. As a relationship-driven company, establishing healthy wholesale relationships is a major focus at this year's Buyer-Grower Expo.

**Desired Markets:** Grocery Chains, Institutions (Hospitals, Schools, etc.), Restaurants

**Farming Practices:** Certified Organic

**Products Available:** Coffee

## Salazon Chocolate Co.

Tom Barnes, Marketing and Operations Manager  
P.O. Box 1221, Eldersburg, MD 21784  
Carroll County  
(443) 300-8877  
tom@salazonchocolate.com  
www.salazonchocolate.com

**Business Description:** Maryland-based maker of premium organic, salted dark chocolate bars. Sold nationally in 2,000+ stores.

**Desired Markets:** Farm Stands and/or Farmers' Market, Grocery Chains, Institutions (Hospitals, Schools, etc.)

**Farming Practices:** Certified Organic

**Products Available:** Chocolate

---

## Schrolls Gourmet Foods, Inc.

Jerry Joyce, Owner  
 3715 4th Ave., Edgewater, MD 21037  
 Anne Arundel County  
 (443) 995-3363  
 schrollsfood@gmail.com

**Business Description:** Gourmet sauerkraut producer.  
**Desired Markets:** Farm Stands and/or Farmers' Market, Grocery Chains, Restaurants

**Products Available:** Sauerkraut

---

## Shlagel Farms

Russell Shlagel, Owner  
 12850 Shlagel Road, Waldorf, MD, 20601  
 Charles County  
 (301) 645-4554  
 info@shlagelfarms.com  
 www.shlagelfarms.com

**Business Description:** We are proud to be a Maryland Century Family Farm. We have a pick-your-own strawberry patch in May and a pick-your-own pumpkin patch in October. We also grow a large variety of fruits and vegetables that we retail at local farmer's markets and wholesale to several chain stores.

**Desired Markets:** Grocery Chains, Institutions (Hospitals, Schools, etc.), Restaurants

**Farming Practices:** Conventional

**Food Quality Programs:** USDA Harmonized GAP

**Products Available:** Asparagus, Beets, Blackberries, Blueberries, Broccoli, Brussels Sprouts, Cabbage, Cantaloupes, Collards, Cucumbers, Eggplant, Green Beans, Green Onions, Green Peppers, Hot Peppers, Kale, Leeks, Lima Beans, Melons, Nectarines, Onions, Peaches, Peas, Radishes, Spinach, Squash Strawberries, Sweet Corn, Swiss Chard, Tomatillos, Tomatoes, Turnips, Watermelons, Zucchini, Beef, Pork

---

## Somerset Bay Foods

Richard Evanusa, President  
 12138 Carol Lane, Princess Anne, MD 21853  
 Somerset County  
 (410) 651-4505  
 rmevanusa@juno.com

**Business Description:** We manufacture soups, seafood marinades and seasoning blends and produce Maryland crab soup, cream of crab soup and New England clam chowder. We also manufacture and bottle a fish marinade and a shrimp marinade.

**Desired Markets:** Grocery Chains

**Farming Practices:** Conventional

**Products Available:** Soups, Marinades, Seasonings

---

## South Mountain Creamery

Lori Sallat, Marketing Director  
 8305 Bolivar Road, Middletown MD, 21679  
 Frederick County  
 (410) 708-5940  
 lori.sallet@smcdairy.com  
 www.southmountaincreamery.com

**Business Description:** Production of all natural grass fed milk, cream, yogurt, sour cream, butter and ice cream. All of our dairy comes from cows we milk ourselves on our farm. Certified Humane, Cage Free eggs, all natural, grass fed beef raised on our pastures.

**Desired Markets:** Farm Stands and/or Farmers' Market, Grocery Chains, Restaurants

**Farming Practices:** Grass Fed/Pastured

**Products Available:** Beef, Chicken, Pork, Butter, Eggs, Ice Cream, Milk, Yogurt

---

## Stoecker Farms

Charles Stoecker, Owner/Production Manager  
 2501 Gibson Road, White Hall, MD 21161  
 Baltimore County  
 (410) 340-2372  
 Stoecker.farms@gmail.com  
 www.Stoeckerfarms.com

**Business Description:** Stoecker Farms is a 127-year-old family farm specializing in vegetables and small fruit. We follow organic practices and Integrated Pest Management. We raise a wide variety of heirloom tomatoes and ethnic vegetables.

**Desired Markets:** Farm Stands and/or Farmers' Market, Grocery Chains, Institutions (Hospitals, Schools, etc.), Restaurants

**Food Quality Programs:** MD GAP Certification

**Products Available:** Arugula, Asparagus, Beets, Blackberries, Blueberries, Bok Choy, Broccoli, Brussels Sprouts, Cabbage, Cantaloupes, Carrots, Cauliflower, Celery, Collards, Cucumbers, Daikon, Eggplant, Endive, Garlic, Green Beans, Green Onions, Green Peppers, Hot Peppers, Kale, Leeks, Lettuce, Lima Beans, Melons, Mustard Greens, Okra, Onions, Parsnips, Peas, Potatoes, Radishes, Raspberries, Rhubarb, Rutabagas, Salad Greens, Shallots, Spinach, Squash, Strawberries, Sweet Corn, Sweet Peppers, Sweet Potatoes, Swiss Chard, Tomatillos, Tomatoes, Turnips, Watermelons, Zucchini

---

## Strohmer's Farm

Brenda Strohmer, Owner  
 3501 Hernwood Road, Woodstock, MD 21163  
 Baltimore County  
 (410) 922-5060  
 bastrohmer@hotmail.com  
 www.strohmersfarm.com

**Business Description:** We are a farm offering natural beef, pork and goat. Our farm features an on-farm stand with our meats. We also offer fall activities with farm tours, pumpkin patch, corn maze and other activities.

**Food Quality Programs:** USDA Inspection (Beef, Pork, Poultry)

**Products Available:** Beef, Chicken, Goat, Pork

---

## The Sweet Farm

Rachel Armistead, Owner  
 11301 Renner Road, Woodsboro, MD 21798  
 Frederick County  
 (240) 397-0484  
 rachel@thesweetfarm.com  
 www.thesweetfarm.com

**Business Description:** The Sweet Farm offers a diverse line of naturally fermented foods made with nothing but organic and local vegetables, sea salt, and spices. Our krauts, pickles, and fermented mustards are full of beneficial bacteria that aid digestion and nourish the microbiome, making them as healthy as they are delicious. The Sweet Farm's products are available for wholesale purchase, retail purchase through our markets and on-line store, and as part of our catering and event menus.

**Desired Markets:** Farm Stands and/or Farmers' Market, Grocery Chains

**Farming Practices:** Certified Organic

**Products Available:** Sauerkraut, Pickles and Mustards

---

## Two Oceans True Foods, Inc.

Gaylord Clark, President  
 1704 Hillside Road, Stevenson, MD 21153  
 Baltimore County  
 (410) 415-5846,  
 sales@totfnaturalfoods.com  
 www.totfnaturalfoods.com

**Business Description:** Wholesale/retail sales of pasture-raised poultry, eggs, and pork as well as fresh and flash-frozen seafood products.

**Desired Markets:** Farm Stands and/or Farmers' Market, Grocery Chains, Institutions (Hospitals, Schools, etc.), Restaurants

**Farming Practices:** Grass Fed/Pastured

**Food Quality Programs:** USDA Inspection (Beef, Pork, Poultry)

**Products Available:** Chicken, Pork, Turkey, Eggs, Shellfish and Other Seafood

## WOMSAUCE, LLC

Houman Rasouli, Owner  
 11808 Danville Drive, North Bethesda, MD 20852  
 Montgomery County  
 (410) 963-7361  
 houman@womsauce.com  
 www.womsauce.com

**Business Description:** Our sauces started as family recipes in our own home kitchen and around the dinner table. They were created to enhance every dish from appetizer to the entree. Their flavor-enhancing characteristics intensify base dishes' flavor versus just adding heat that overpowers the taste. After years of friends and family asking us to make extra sauce to take home with them, we decided to make the sauces available for all the food lovers out there. We hope they bring as much joy to your dishes as they have with ours.

**Desired Markets:** Farm Stands and/or Farmers' Market, Grocery Chains, Restaurants

**Farming Practices:** Conventional

**Products Available:** Hot Sauces

## Zekiah Farms

Cindy Beuchert, Owner  
 P.O. Box 784,  
 5235 Bryantown Road, Bryantown, MD 20617  
 Charles County  
 (240) 216-4065  
 cmbeuchert@gmail.com

**Business Description:** Meats: naturally raised meats are hormone, antibiotic, and steroid free. Our animals are raised on a natural diet of pasture, hay, and grain to meet their nutritional needs. Premium Dry Aged Beef (Dry-aged for 14-21 days), provides a more flavorful and tender cut. The meats are flash-frozen and vacuum-sealed to maintain its freshness and flavor. Our hotdogs, meat sticks, jerky, and smoked products are uncured and nitrate/nitrite-free. Honey: We provide quality local raw honey, available from 2 oz to 5 lb containers both glass and plastic. Direct and wholesale. Produce: Seasonal check for current availability.

**Desired Markets:** Farm Stands and/or Farmers' Market, Grocery Chains, Restaurants

**Farming Practices:** Organic Exempt

**Food Quality Programs:** USDA Inspection (Beef, Pork, Poultry)

**Products Available:** Beets, Cabbage, Cauliflower, Cucumbers, Green Beans,,Green Peppers, Kale, Onions, Squash, Sweet Corn, Sweet Peppers, Swiss Chard, Tomatoes, Watermelons, Zucchini, Beef, Chicken, Goat, Lamb, Pork, Honey

## Zivaara Chocolatier

Puja Satiani, Founder & Chocolatier  
 2341 Distribution Circle, Silver Spring, MD 20910  
 Montgomery County  
 (240) 772-1589  
 puja@zivaara.com  
 www.zivaara.com

**Business Description:** "Zivaara," which is derived from ancient South Asian languages, means "best life." Zivaara reflects our belief that chocolate, and its mother, the cacao bean, can be part of our best lives given their uses and their mood-enhancing, beautifying, and antioxidant properties. We create our edibles and skincare in small batches, including chocolate bars, truffles, toffees, caramels, dry rub for cooking, and body oil. Products are natural and without preservatives. Vegan, dairy-free options available.

**Desired Markets:** Grocery Chains, Institutions (Hospitals, Schools, etc.), Restaurants

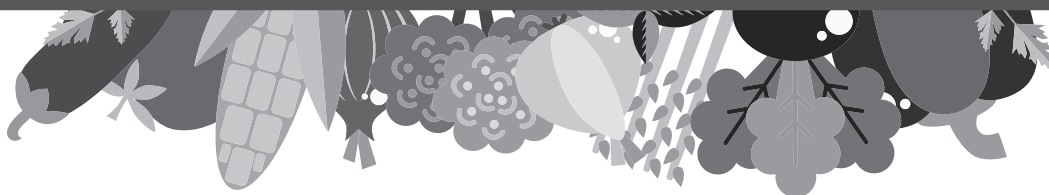
**Products Available:** Chocolate Truffles, Caramels, Hot Drinking Chocolate, Chocolate Bars, Toffees, Skincare, Customized Chocolates





# BUYERS/DISTRIBUTERS

A&H Quality Foods	Euclid Exporters Inc	Richardson Farms
Ahold	FoodPRO Corp	Riva Gardens
AIDA Bistro & Wine Bar	Franklins	Safeway Eastern
Belair Produce	Fully Grown	SAGE Dining Services
Bo Brooks Restaurant	Fresh Pro Food Distributors	Sanofi
Capital Area Food Bank	From the Farmer	Santoni's Marketplace & Catering
Carrol's Creek Cafe	Greenbelt Co-op Supermarket & Pharmacy	Severn Inn
CCPS DBA Shore Gourmet Market	Harris Teeter	Simply Delicious Desserts & Catering
The Charmery	Hearn Kirkwood	Slate Farm Brewery
Chesapeake Brewing Co.	Hellas Restaurant and Lounge	Somerset County Public Schools
Chesapeake's Bounty	Herrington on the Bay	Specialty Food Dynamics, LLC
The Class Produce Group	Hunter Bros. Inc	Sweetgreen
The Common Market Mid Atlantic	Keany Produce Company	Tall Tales Brewing Co.
The Comus Inn	Laurrapin Grille	The Palate Pleasers
Dawson's Market	Lidl US	Union Hospital of Cecil County
Di Pasquale's Italian Market	Marriott	Westin Annapolis
Dorchester's Farm Foods	Modern Cook Shop	Whole Foods Market
Downtown Crown Wine & Beer	Old Line Fine Wine, Spirits & Bistro	
Eastern Food Services, Inc.	Preserve	
	Produce Source Partners	



## A&H Quality Foods

www.anhmarket.com

### Santi Zabaleta, Owner

santi@anhmarket.com, (703) 789-5060

### Chris Hadley, Manager

chadley@anhmarket.com, (703) 789-5060

### Arthur Hapner, Director of Purchasing

ahapner@anhmarket.com, (703) 789-5060

4215-B Howard Avenue, Kensington, MD 20895  
Montgomery County

**Business Description:** Food distributor and food retail store.

**Preferred Farming Practices:** Conventional, Grass Fed/Pastured, Certified Organic

**Preferred Food Quality Programs:** MD GAP Certification, Rabbit and Poultry On-Farm Slaughter/Processing Program, USDA GAP/GHP Certification, USDA Harmonized GAP, USDA Inspection (Beef, Pork, Poultry)

**Products Needed:** All fruits and vegetables, All meats, All seafood, All dairy and egg products

## Ahold

### Kris Sechler, Merchandiser

kris.sechler@ahold.com, (717) 240-7522

### Anthony Chanka, Category Merchandise

anthony.chanka@ahold.com, (717) 240-7593

1149 Harrisburg Pike, Carlisle, PA 17013  
Cumberland County

**Business Description:** Retailer

**Preferred Farming Practices:** Conventional, Certified Organic

**Preferred Food Quality Programs:** MD GAP Certification, USDA GAP/GHP Certification

**Products Needed:** All fruits and vegetables

## AIDA Bistro & Wine Bar

www.aidabistro.com

### Joe Barbera, Owner

joe@aidabistro.com, (410) 953-0500

6741 Columbia Gateway Drive, Columbia, MD 21046  
Howard County

**Business Description:** AIDA Bistro is an Italian restaurant in Columbia, MD committed to providing you with the best culinary experience. We offer fresh food, straight from local farms, paired with our unique wine experience featuring one of the largest offerings of Wines On Tap in the US.

**Preferred Farming Practices:** Conventional, Grass Fed/Pastured, Certified Organic

**Products Needed:** All fruits and vegetables, Beef, Bison, Lamb, Pork, Rabbit, Turkey, All seafood, All dairy and egg products

## Belair Produce

www.belairproduce.com

### Allison Dugdale, Account Manager

msdugdale@gmail.com, (410) 782-8000

### J.J. Minetola, Sales Representative

jj@belairproduce.com, (410) 782-8000

7226 Parkway Drive, Hanover, MD 21076  
Baltimore County

**Business Description:** Mid-sized, independent, family-owned produce and gourmet specialty company serving the tri-state area.

**Preferred Farming Practices:** Conventional, Certified Organic

**Preferred Food Quality Programs:** Maryland Egg Quality Assurance

**Products Needed:** All fruits and vegetables, All dairy and egg products

## Bo Brooks Restaurant

www.bobrooks.com

### Kristofor Sandholme, Chef

Ksandholm@bobrooks.com, (410) 558-0202

2780 Light House Point East, Baltimore, MD 21224  
Baltimore City

**Business Description:** This long-running waterfront seafood spot specializing in cocktails & crabs resembles a lighthouse.

**Preferred Farming Practices:** Conventional, Grass Fed/Pastured, Certified Organic

**Products Needed:** All fruits and vegetables, All meats, All seafood, All dairy and egg products

## Capital Area Food Bank

### Ronny Faragasso, Assistant Director of Procurement

faragasso@capitalareafoodbank.org  
(202) 644-9886

4900 Puerto Rico Ave., NE, Washington, DC 20017  
Washington, DC

**Business Description:** Non-profit food bank. We purchase fresh produce and dry goods.

**Preferred Farming Practices:** Conventional

**Products Needed:** Apples, Carrots, Onions, Potatoes, Sweet Potatoes, Turkey, plus #2 produce and/or excess inventory.

## Carrol's Creek Cafe

www.carrolscreek.com

### Ricardo Bello

rbello.carrolscreek@gmail.com, (410) 263-8102

### Jeffrey Jacob

jacobs.carrolscreek@gmail.com, (410) 263-8102

### Richard McClure, General Manager

rmclure@carrolscreek.com, (410) 263-8102

410 Severn Ave, Annapolis, MD 21403  
Anne Arundel County

**Business Description:** Elegant waterfront seafood restaurant overlooking Spa Creek and serving classic Chesapeake fare.

**Preferred Farming Practices:** Conventional, Grass Fed/Pastured Certified Organic

**Preferred Food Quality Programs:** Maryland Egg Quality Assurance, USDA Inspection (Beef, Pork, Poultry)

**Products Needed:** All fruits and vegetables, All meats, All seafood, All dairy and egg products

## CCPS - DBA Shore Gourmet Market

www.shoregourmetmarket.com

### Mark Harris, Food Production/Education Manager

harris.mark@ccpsstaff.org, (410) 479-2452

512 Franklin St, Denton, MD 21629  
Caroline County

**Business Description:** Breakfast/Lunch restaurant located in the Caroline Culinary Center.

**Preferred Farming Practices:** Conventional, Grass Fed/Pastured, Certified Organic

**Products Needed:** All fruits and vegetables, All meats, Shrimp, All dairy and egg products

## The Charmery

www.thecharmery.com

### David Alima, Master Creamer

david@thecharmery.com, (410) 814-0493

W 36th St., Baltimore, MD 21211  
Baltimore City

**Business Description:** Ice cream shop located in Baltimore City.

**Preferred Farming Practices:** Grass Fed/Pastured, Certified Organic

**Products Needed:** All fruits and vegetables, All dairy and egg products

---

## Chesapeake Brewing Co.

www.chesbrewco.com

**Carolyn Marquis, Owner**

chesbrewco@yahoo.com, (410) 268-0000

114 West Street, Annapolis, MD 21401  
Anne Arundel County

**Business Description:** Brewing great beers and serving farm-to-table fare.

**Preferred Farming Practices:** Conventional

**Preferred Food Quality Programs:** Rabbit and Poultry On-Farm Slaughter/Processing Program, USDA Inspection (Beef, Pork, Poultry)

**Products Needed:** Brussels Sprouts, Spinach, Sprouts, Strawberries, Tomatoes, Beef, Chicken, Gamebird, Lamb, Crab Meat, Mussels, Oysters, Shrimp, Soft Crabs, Striped Bass, Butter, Hops

---

## Chesapeake's Bounty

www.chesapeakebounty.com

**Veronica Cristo, Store Manager, North Beach Market**

veronica@chesapeakebounty.com, (410) 586-3881

**William Kreamer, Owner**

william@chesapeakebounty.com (410) 586-3881

6415 Saint Leonard Road, Saint Leonard, MD 20685  
Calvert County

**Business Description:** A Calvert County-based chain of food markets that sells exclusively foods from the Chesapeake region, right down to the ingredients.

**Preferred Farming Practices:** Grass Fed/Pastured, Certified Organic, Other (organically-grown, biodynamic, permaculture)

**Products Needed:** All fruits and vegetables, All meats, All seafood, All dairy and egg products

---

---

## The Class Produce Group

www.classproduce.com

**Daniel Ehm, Buyer/Sales**

dehm@classproduce.com, (410) 799-5700

8477 Dorsey Run Road, P.O. Box 2003, Jessup, MD 20794  
Howard County

**Business Description:** Wholesale distributor of fruits and vegetables.

**Preferred Farming Practices:** Conventional, Certified Organic

**Preferred Food Quality Programs:** MD GAP Certification, USDA GAP/GHP Certification

**Products Needed:** All fruits and vegetables, Eggs

---

## The Common Market Mid Atlantic

www.commonmarketphila.org

**Abby Massey, Outreach Coordinator**

abby@thecommonmarket.org, (215) 275-3435

**Keirstan Kure, Procurement Associate**

cmmaprocurement@thecommonmarket.org  
(215) 275-3435

428 E Erie Ave., Philadelphia, PA 19134  
Montgomery County

**Business Description:** The Common Market is a mission-driven distributor of local foods to the Mid-Atlantic region. Our mission is to strengthen regional farms while making the local bounty accessible to communities and the institutions that serve them. We provide the infrastructure to connect public and private schools, hospitals, universities, grocery stores and workplaces to good food grown by our region's sustainable farmers.

**Preferred Farming Practices:** Grass Fed/Pastured, Certified Organic, Other (Sustainable/IPM/ Manage for soil health, small and medium sized family farms)

**Preferred Food Quality Programs:** USDA GAP/GHP Certification, USDA Inspection (Beef, Pork, Poultry)

**Products Needed:** All fruits and vegetables, Chicken, Lamb, Pork, All dairy and egg products, Value-added products, jams and jellies

---

---

## The Comus Inn

www.thecomusinn.com

### Elise Wendland, Chef

elise.wendland@gmail.com, (301) 349-5100

23900 Old Hundred Road, Dickerson, MD 20842  
Montgomery County

**Business Description:** Restaurant and event venue in the agricultural reserve of Montgomery County by Sugarloaf Mountain.

**Preferred Farming Practices:** Conventional, Grass Fed/Pastured, Certified Organic

**Preferred Food Quality Programs:** USDA Inspection (Beef, Pork, Poultry)

**Products Needed:** All fruits and vegetables, Beef, Chicken, Duck, Gamebird, Lamb, Pork, Rabbit, Crab Meat, Oysters, Perch, Shrimp, Soft Crabs, Striped Bass, All dairy and egg products

---

## Dawson's Market

### Dan Lamprecht, Purchasing Director

danl@ellwoodthompsons.com, (262) 352-0517

225 N Washignton St. Rockville, MD 20850  
Montgomery County

**Business Description:** Retail natural foods store.

**Preferred Farming Practices:** Grass Fed/Pastured, Certified Organic, Other (Anything fitting our standards)

**Preferred Food Quality Programs:** MD GAP Certification, USDA GAP/GHP Certification, USDA Inspection (Beef, Pork, Poultry)

**Products Needed:** All fruits and vegetables, Beef, Bison, Chicken, Duck, Goat, Lamb, Ostrich, Pork, Turkey, All seafood, All dairy and egg products

---

## Di Pasquale's Italian Market

www.dipasquales.com

### Joseph Di Pasquale, Owner

mustogusto@aol.com, (410) 276-6787

### Sabrina Di Pasquale, Owner

sabrimastellone@verizon.net, (410) 276-6787

3700 Gough Street, Baltimore, MD 21224  
Baltimore County

**Business Description:** A family-owned business that has been around for over 100 years. A hidden gem that sells imported Italian foods and products.

**Preferred Farming Practices:** Certified Organic

**Preferred Food Quality Programs:** MD GAP Certification, Rabbit and Poultry On-Farm Slaughter/Processing Program, Maryland Egg Quality Assurance, USDA GAP/GHP Certification, USDA Harmonized GAP, USDA Inspection (Beef, Pork, Poultry)

**Products Needed:** All fruits and vegetables, All meats, All seafood, All dairy and egg products

---

## Dorchester's Farm Foods

### Ronald Williams, Owner

ron@dorchesterseafood.com, (202) 813-5993

3522 Terrace Drive, Apt C, Suitland, MD 20746  
Prince George's County

**Business Description:** We are a distributor of farm foods directly to homes, stores and retail institutions.

**Preferred Farming Practices:** Conventional, Certified Organic

**Preferred Food Quality Programs:** MD GAP Certification, Rabbit and Poultry On-Farm Slaughter/Processing Program, Maryland Egg Quality Assurance, USDA GAP/GHP Certification, USDA Harmonized GAP, USDA Inspection (Beef, Pork, Poultry)

**Products Needed:** All fruits and vegetables, All meats, All seafood, All dairy and egg products

---

## Downtown Crown Wine & Beer

www.downtowncrownwine.com

### William Van Laaten, Wine Buyer/ Food Manager

wvanlaaten@gmail.com, (301) 674-5015

303 Copley Place, Gaithersburg, MD 20878  
Montgomery County

**Business Description:** Wine & beer Bar that also offers small plates to enjoy with the beverages.

**Preferred Farming Practices:** Grass Fed/Pastured, Certified Organic

**Preferred Food Quality Programs:** USDA Inspection (Beef, Pork, Poultry)

**Products Needed:** All meats

---

## Eastern Food Services, Inc.

www.easternfood.com

### Chris Umstot, Sr. Purchasing and Sales Manager

chrisumstot@easternfood.com, (202) 713-0888

8660 Cherry Lane, Unit 39, Laurel MD, 20707  
Prince George's County

**Business Description:** Eastern Food Services, Inc., carries a wide variety of foods and products, offering businesses the flexibility and selection to customize your menus.

**Preferred Farming Practices:** Conventional, Grass Fed/ Pastured, Certified Organic

**Products Needed:** All fruits and vegetables, Chicken, All seafood, All dairy and egg products

---

## Euclid Exporters, Inc.

www.euclid-energy.com

### Mohammad Zaheen, President

corporate@euclid-energy.com  
(240) 252-2350

604 S. Frederick St., Suite 215, Gaithersburg, MD 20877  
Montgomery County

**Business Description:** Exporter of agricultural

commodities

**Preferred Farming Practices:** Conventional, Grass Fed/ Pastured, Certified Organic

**Preferred Food Quality Programs:** MD GAP Certification, Rabbit and Poultry On-Farm Slaughter/ Processing Program, Maryland Egg Quality Assurance, USDA GAP/GHP Certification, USDA Harmonized GAP, USDA Inspection (Beef, Pork, Poultry)

**Products Needed:** Chicken, Cheese, Yogurt

---

## FoodPRO Corp

www.myfoodpro.com

### Rocky Rinehart, VP of Purchasing

rrinehart@myfoodpro.com, (301) 663-3171

321 East 5th Street, Frederick, MD 21701  
Frederick County

**Business Description:** Wholesale broadline foodservice distributor.

**Preferred Food Quality Programs:** Conventional

**Products Needed:** All fruits and vegetables, All meats, All seafood, All dairy and egg products

---

## Franklins

www.franklinsbrewery.com

### Mike Franklin, Owner

bymortoyz@hotmail.com, (301) 221-4787

5121 Baltimore Ave, Hyattsville, MD 20781  
Prince George's

**Business Description:** Brewpub serving such American standards as burgers and steaks.

**Preferred Farming Practices:** Conventional, Grass Fed/ Pastured, Certified Organic

**Preferred Food Quality Programs:** USDA Inspection (Beef, Pork, Poultry)

**Products Needed:** All fruits and vegetables, All meats, All seafood, All dairy and egg products

---

## Fresh Pro Food Distributors

www.freshprofood.com

### Howard Fisher, Buyer

hfisher@freshprofood.com, (201) 832-1895

1 Dedrick Road, West Caldwell, NJ 07007  
Sussex County

**Business Description:** Food distributor, including fruits and vegetables.

**Preferred Farming Practices:** Conventional, Certified Organic

**Products Needed:** All fruits and vegetables, Cheese

## From the Farmer

www.fromthefarmer.com

### Tyler Baer, Director of Sourcing

tbaer@fromthefarmer.com, (303) 525-6997

5204 Sunnyside Ave, Beltsville, MD 20705  
United States

**Business Description:** A food delivery company servicing the greater Washington DC area with fresh produce, meats, dairy, and artisanal baked goods from small farms and producers.

**Preferred Farming Practices:** Grass Fed/Pastured, Certified Organic

**Preferred Food Quality Programs:** MD GAP Certification, USDA GAP/GHP Certification, USDA Inspection (Beef, Pork, Poultry)

**Products Needed:** All fruits and vegetables, Duck, Goat, Lamb, Pork, Turkey, Crab Meat, Shrimp, Cheese, Eggs

## Fully Grown

### Brianna Billups

briannabillups95@gmail.com, (410) 905-8985  
1142 Pelham Wood Road, Parkville, MD 21234  
Baltimore County

**Business Description:** Fully Grown is an organic line of fruit-based snacks focused on changing the nutritional health of children, families, and communities.

**Preferred Farming Practices:** Certified Organic

**Products Needed:** All fruits and vegetables, Herbs and spices

## Greenbelt Co-op Supermarket & Pharmacy

www.greenbelt.coop

### Joseph Gareri, Outreach Coordinator

info@greenbelt.coop, (301) 474-0522

121 Centerway, Greenbelt, MD 20770  
Prince George's County

**Business Description:** Community market and pharmacy featuring natural & organic foods, beer and wine, plus DVD rentals.

**Preferred Farming Practices:** Conventional, Grass Fed/Pastured, Certified Organic

**Preferred Food Quality Programs:** USDA Inspection (Beef, Pork, Poultry)

**Products Needed:** All fruits and vegetables, All meats, All seafood, All dairy and egg products, Beer, wine, and health and beauty products

## Harris Teeter

www.harristeeter.com

### Brandon Ashley, Meat/Seafood Local Buyer

bashley@harristeeter.com, (757) 645-5332

### Robert Daly, Local Produce Field Buyer

rdaly@harristeeter.com, (202) 744-0348

701 Crestdale Road, Matthews, NC 28105

**Business Description:** Harris Teeter Supermarkets, Inc. is an American supermarket chain based in Matthews, North Carolina, just outside Charlotte.

**Preferred Farming Practices:** Conventional, Certified Organic

**Preferred Food Quality Programs:** MD GAP Certification, USDA GAP/GHP Certification, USDA Inspection (Beef, Pork, Poultry)

**Products Needed:** All fruits and vegetables, All seafood

## Hearn Kirkwood

www.HearnKirkwood.com

### Charles Gilbert, CEO

Cgilbert@hearnkirkwood.com, (410) 712-6000

### Ed Hunter, Director

ehunter@hearnkirkwood.com, (410) 712-6000

7251 Standard Drive, Hanover, MD 21076  
Anna Arundel County

**Business Description:** Perishable food distributor

**Preferred Farming Practices:** Conventional, Grass Fed/  
Pastured, Certified Organic

**Preferred Food Quality Programs:** MD GAP  
Certification, USDA GAP/GHP Certification, USDA  
Inspection (Beef, Pork, Poultry)

**Products Needed:** All fruits and vegetables, All meats,  
All seafood, All dairy and egg products

## Hellas Restaurant and Lounge

www.hellasrestaurantandlounge.com

### Michael Stavlas, Owner

mstavlas@verizon.net, (410) 987-0948

### Mandy Stavlas, Manager/Purchaser

mdisney1975@gmail.com, (410) 987-0948

8498 Veterans Hwy, Millersville, MD 21108  
Anne Arundel County

**Business Description:** Hellas Restaurant and Lounge is a  
family-owned business located in Anne Arundel County.

**Preferred Farming Practices:** Conventional, Grass Fed/  
Pastured

**Products Needed:** Apples, Apricots, Asparagus, Beets,  
Blackberries, Blueberries, Broccoli, Brussels Sprouts,  
Cantaloupe, Carrots, Cauliflower, Celery, Cherries,  
Collards, Cucumbers, Edamame Soybeans, Eggplant,  
Figs, Garlic, Grapes, Green Beans, Green Onions, Green  
Peppers, Horseradish, Hot Peppers, Kale, Leeks, Lettuce,  
Lima Beans, Melons, Mushrooms, Mustard Greens,  
Onions, Peaches, Pears, Peas, Potatoes, Radishes,  
Raspberries, Salad Greens, Shallots, Spinach, Squash,  
Strawberries, Sweet Corn, Sweet Peppers, Sweet  
Potatoes, Tomatillos, Tomatoes, Watermelons, Zucchini,

Beef, Bison, Chicken, Goat, Lamb, Pork, Turkey, Veal,  
Clams, Crab Meat, Flounder, Hard Crabs, Mussels, Oysters,  
Shrimp, Soft Crabs, Striped Bass, All dairy and egg  
products, Polenta/grits, coffee

## Herrington on the Bay

www.herringtononthebay.com

### Anna Chaney, Owner

achaney@herringtononthebay.com, (410) 741-5101

### Mike Archibald, Chef

chefs@herringtononthebay.com, (410) 741-5101

### Matt Grosse, Chef

chefs@herringtononthebay.com, (410) 741-5101

### Jennifer Morse, Chef

chefs@herringtononthebay.com, (410) 741-5101

### Bill Schockley, Chef

chefs@herringtononthebay.com, (410) 741-5101

7151 Lake Shore Drive, North Beach, MD 20714  
Anne Arundel County

**Business Description:** Full-service caterer and event  
venue on the Chesapeake Bay.

**Preferred Farming Practices:** Grass Fed/Pastured  
USDA Inspection (Beef, Pork, Poultry)

**Products Needed:** All fruits and vegetables, All meats,  
All seafood, All dairy and egg products

## Hunter Bros. Inc

www.pwpm.net/merchants/hunter

### Chip Wiechec, President

hbfruit@aol.com, (215) 336-4343

6700 Essington Ave., Units H-8, H-9  
Philadelphia, PA 19153

**Business Description:** Wholesale produce distributor.

**Preferred Farming Practices:** Conventional

**Preferred Food Quality Programs:** USDA GAP/GHP  
Certification

**Products Needed:** All fruits and vegetables, Edamame  
Soybeans



## Keany Produce Company

www.keanyproduce.com

**Chris Keany, Account Executive**

cjk@keanyproduce.com, (301) 772-3333

**Roy Cargiulo, Executive Director Sales and Marketing**

roy@keanyproduce.com, (301) 772-3333

**Anthony Cargiulo, Sales**

arc@keanyproduce.com, (301) 772-3333

**Giovanni Cesaratto, Specialty Foods Buyer**

Giovanni.Cesaratto@KeanyProduce.com, (703) 618-5426

**Daniel ORourke, Purchasing/Procurement**

daniel.orourke@keanyproduce.com, (240) 464-6197

**Jos. Morales, Sales**

jose.morales@keanyproduce.com (240) 694-6055

**Steve Welch, Local Product Coordinator**

stephen.welch@keanyproduce.com, (301) 618-5364

3310 75th Avenue, Landover, MD 20785

Prince George's County

**Business Description:** Regional distributor of produce and gourmet food items to the food service trade.

**Preferred Farming Practices:** Conventional, Grass Fed/ Pastured, Certified Organic, Other (hydroponic)

**Preferred Food Quality Programs:** MD GAP Certification, USDA GAP/GHP Certification, USDA Harmonized GAP, Maryland Egg Quality Assurance

**Products Needed:** All fruits and vegetables, All meats, All seafoods, All dairy and egg products, local fruit jams packed in 1.25 ounce jars, mini fruit jams and nut butters

## Laurrapin Grille

www.laurrapin.com

**Sherifa Clarke, General Manager**

sherifa@laurrapin.com, (410) 459-6017

**Janice Rogers, General Manager**

Janice@laurrapin.com, (410) 459-6017

**Kristina Sciarra, Executive Chef/Owner**

Kristina@laurrapin.com, (410) 939-4956

209 N Washington Street, Havre de Grace, MD 21078

Harford County

**Business Description:** Restaurant and catering establishment serving organic, locally sourced New American fare and drinks, with weekend live music.

**Preferred Farming Practices:** Conventional, Grass Fed/ Pastured, Certified Organic

**Products Needed:** All fruits and vegetables, All meats, All seafood, All dairy and egg products

## Lidl US

www.lidl.com

**Tammy Roberts, Purchasing Manager, Fresh Produce**

tammy.roberts@lidl.us, (571) 882-3836

3500 S. Clark Street, Arlington, VA 22202

Arlington County

**Business Description:** Grocery retail store.

**Preferred Farming Practices:** Conventional, Certified Organic

**Preferred Food Quality Programs:** MD GAP Certification, USDA Harmonized GAP

**Products Needed:** All fruits and vegetables

## Marriott

www.marriott.com

**Kiran Patnam**

Kiran.patnam@marriott.com, (443) 250-8789

**Jeff Siebold, Director of Restaurants**

jeff.siebold@marriott.com, (443) 250-8789

700 Aliceanna Street, Baltimore, MD 21202

Baltimore City

**Business Description:** Hotel and restaurants.

**Preferred Farming Practices:** Conventional, Grass Fed/ Pastured, Certified Organic

**Preferred Food Quality Programs:** USDA Inspection (Beef, Pork, Poultry)

**Products Needed:** All fruits and vegetables, All meats, All seafood, All dairy and egg products

---

## Modern Cook Shop

www.moderncookshop.com

### Andy Gruver, Owner

gruver.forkandwrench@gmail.com, (443) 799-2504

### Tom Hamrick, General Manager

uwrestaurant@gmail.com, (443) 540-0122

901 South Wolfe St., Baltimore, MD 23231  
Baltimore City

**Business Description:** Market and restaurant serving seasonal American eats plus craft cocktails in expansive digs.

**Preferred Farming Practices:** Conventional, Grass Fed/ Pastured, Certified Organic

**Preferred Food Quality Programs:** MD GAP Certification, Maryland Egg Quality Assurance, USDA GAP/GHP Certification, USDA Harmonized GAP, USDA Inspection (Beef, Pork, Poultry)

**Products Needed:** All fruits and vegetables, All meats, All seafood, All dairy and egg products

---

## Old Line Fine Wine, Spirits & Bistro

www.oldlinewine.com

### Larry Pendleton, Owner

Larry@oldlinewine.com, (301) 937-5999

### Tad Peel, AGM

Tad@oldlinewine.com, (301) 937-5999

11011 Baltimore Avenue, Beltsville, MD 20705  
Montgomery County

**Business Description:** Casual American Bistro with 140 seats, looking to explore sourcing locally where we can.

**Preferred Farming Practices:** Grass Fed/Pastured, Certified Organic

**Products Needed:** All fruits and vegetables, All meats, All seafood, All dairy and egg products

---

## The Palate Pleasers

www.palatepleasers.com

### Amy Daniels, Chef

amy.palatepleasers@me.com, (410) 263-6941

1023 Bay Ridge Ave., Annapolis MD 21043  
Anne Arundel County

**Business Description:** Full service catering and gourmet to go (carry out). 27 years in business.

**Preferred Farming Practices:** Conventional, Grass Fed/ Pastured, Certified Organic

**Preferred Food Quality Programs:** USDA Inspection (Beef, Pork, Poultry)

**Products Needed:** All fruits and vegetables, Beef, Chicken, Pork, Turkey, Veal, Clams, Crab Meat, Flounder, Mussels, Oysters, Shrimp, All dairy and egg products

---

## Preserve

www.preserve-eats.com

### Michelle Hoffman, GM/Owner

michelle@preserve-eats.com, (443) 598-6920

### Jeremy Hoffman, Chef/ Owner

jeremy@preserve-eats.com, (443) 598-6920

### Brian Hohl, Sous Chef

peopleschamp385@aol.com, (443) 598-6920

### Brian Cieslak, Line Cook

bcieslak64@gmail.com, (443) 598-6920

164 Main Street, Annapolis, MD 21401  
Anne Arundel County

**Business Description:** Casual American Restaurant with a focus on pickling and fermentation.

**Preferred Farming Practices:** Conventional, Grass Fed/ Pastured, Certified Organic

**Products Needed:** All fruits and vegetables, All meats, All seafood, All dairy and egg products

---

## Produce Source Partners

www.producesourcepartners.com

### Dan Budi, Director of Retail Sales

dbudi@webppsp.com, (804) 412-2564

13167 Telcourt Rd, Ashland, VA 23005  
Hanover County

**Business Description:** Wholesale supplier of locally grown produce to major retail chains.

**Preferred Farming Practices:** Conventional, Certified Organic

**Preferred Food Quality Programs:** MD GAP Certification, USDA GAP/GHP Certification

**Products Needed:** All fruits and vegetables

---

## Richardson Farms

www.RichardsonFarms.net

### Les Richardson, President

les@richardsonfarms.net, (410) 335-5900

### Diane Richardson

Diane@richardsonfarms.net, (410) 335-5900

5828 Ebenezer Road, White Marsh MD, 21162  
Baltimore County

**Business Description:** Produce grower and year round farm market operator.

**Preferred Farming Practices:** Conventional

**Products Needed:** Watermelons

---

## Riva Gardens

www.rivagardens.net

### David Morehead, Owner

rivagees@yahoo.com, (410) 956-2942

### Diane Morehead, Owner

rivagees@yahoo.com, (410) 956-2942

3234 Riva Road, Riva, MD 21140  
Anne Arundel County

**Business Description:** Farmers market and produce stand.

**Preferred Farming Practices:** Conventional

**Products Needed:** All fruits and vegetables, Beef, Pork, Crab Meat, All dairy and egg products

---

## Safeway Eastern

www.safeway.com

### Keith Rothgarn, Sr. Buyer - Meat, Seafood, and Deli

keith.rothgarn@safeway.com, (301) 430-6818

16060 Leeland Road, Upper Marlboro, MD 20774  
Prince George County

**Business Description:** American supermarket chain founded in 1915.

**Preferred Farming Practices:** Conventional, Grass Fed/ Pastured, Certified Organic

**Preferred Food Quality Programs:** USDA Inspection (Beef, Pork, Poultry)

**Products Needed:** Beef, Bison, Chicken, Lamb, Pork, Veal, All seafood

---

## SAGE Dining Services

www.sagedining.com

### Stephen Freas, Purchasing Director

steve@sagedining.com, (410) 339-3950

1402 York Rd, Lutherville, MD 21093  
Baltimore County

**Business Description:** A leading provider of sustainable dining services and catering to discerning independent schools and private colleges.

**Preferred Farming Practices:** Conventional, Certified Organic

**Preferred Food Quality Programs:** MD GAP Certification, Rabbit and Poultry On-Farm Slaughter/ Processing Program, Maryland Egg Quality Assurance, USDA GAP/GHP Certification, USDA Harmonized GAP, USDA Inspection (Beef, Pork, Poultry)

**Products Needed:** All fruits and vegetables, All meats, All seafood, All dairy and egg products, Grain products, processed jelly, or other grocery items

---

## Sanofi

### Mary Brown, Sales Representative

janebrowntexas@gmail.com, (254) 715-4296

40409 Milford Dr., Broadlands, VA 20149  
Loudoun County

**Business Description:** Marketing organization.

**Preferred Farming Practices:** Conventional

**Products Needed:** All fruits and vegetables, Broccoli, Strawberries, Swiss Chard, Tomatillos, All meats, All seafood, All dairy and egg products

---

## Santoni's Marketplace & Catering

www.santonis.com

### Michael Serio, Vice President of Operations

mserio@santonis.com, (410) 833-6610

### Mark Ciepiela, Store Manager

mciepiela@santonis.com, (410) 833-6610

### Mary Sakers, Inventory Control Manager

msakers@santonis.com, (410) 833-6610

4854 Butler Road, Glyndon, MD 21071  
Baltimore County

**Business Description:** Upscale deli, bakery and catering company.

**Preferred Farming Practices:** Conventional, Grass Fed/ Pastured

**Preferred Food Quality Programs:** Maryland Egg Quality Assurance, USDA Inspection (Beef, Pork, Poultry)

**Products Needed:** All fruits and vegetables, Beef, Chicken, Pork, Turkey, Veal, All seafood, All dairy and egg products

---

## Severn Inn

www.severninn.com

### Len Baker, Manager

len@severninn.com, (410) 349-4000

### Nick Baker, Executive Chef

nick@severninn.com, (410) 349-4000

1993 Batimore Annapolis BLVD, Annapolis, MD 21409  
Anne Arundel County

**Business Description:** Casual fine dining seafood restaurant.

**Preferred Farming Practices:** Conventional, Grass Fed/ Pastured, Certified Organic

**Preferred Food Quality Programs:** MD GAP Certification, Maryland Egg Quality Assurance, USDA GAP/GHP Certification, USDA Harmonized GAP, USDA Inspection (Beef, Pork, Poultry)

**Products Needed:** Fruits and vegetables, Beef, Chicken, Duck, Gamebird, Pork, All seafood, All dairy and egg products

---

## Simply Delicious Desserts & Catering

www.simplydeliciousdessert.org

### Keisha Sherman, Owner

simplydelicious1@live.com, (800) 704-1192

### Scotty Sherman, Owner

simplydelicious1@live.com, (800) 704-1192

P.O. Box 52941, Potomac, MD 20859  
Montgomery County

**Business Description:** Bakery and catering establishment.

**Preferred Farming Practices:** Conventional

**Preferred Food Quality Programs:** MD GAP Certification, Maryland Egg Quality Assurance, USDA GAP/GHP Certification

**Products Needed:** All fruits and vegetables, Beef, Chicken, Pork, Turkey, Crab Meat, Flounder, Oysters, Perch, Shrimp, All dairy and egg products

---

## Slate Farm Brewery

www.slatefarmbrewery.com

### Denise Cangialosi, Owner

Slatefarmbrewery@gmail.com, (443) 528-7443

2128 Whiteford Road, Whiteford, MD 21160  
Harford County

**Business Description:** We are a new farm business. Our vision is to provide field to table vegetables and beer

**Preferred Farming Practices:** Conventional, Certified Organic

**Products Needed:** Hot Peppers, Tomatoes, Butter, Cheese, Ice Cream, Hops

---

## Somerset County Public Schools

www.somerset.k12.md.us

### Doug Nelson, Manager Food and Nutrition

dnelson@somerset.k12.md.us, (410) 621-6265

### Terry Troxell, Manager Food and Nutrition

ttroxell@somerset.k12.md.us, (410) 621-6265

### Helen Riggins, Coordinator of Food and Nutrition

hriggins@somerset.k12.md.usm (410) 621-6265

7982 A Tawes Campus Drive,  
Westover, MD 21871  
Somerset County

**Business Description:** Food and Nutrition Department for Somerset County Public Schools

**Preferred Farming Practices:** Conventional, Grass Fed/Pastured

**Preferred Food Quality Programs:** MD GAP Certification, USDA Inspection (Beef, Pork, Poultry)

**Products Needed:** All fruits and vegetables, Beef, Bison, Chicken, Turkey, Cheese, Ice Cream, Milk, Yogurt

---



---

## Specialty Food Dynamics, LLC t/a Infusion Hot Sauce Company

Manufacturer of condiments and rubs  
www.spefoody.com

### Alan Kuzminsky, CCO

alank@spefoody.com, (240) 401-0973

19836 Bazzellton Place, Montgomery Village, MD 20886  
Montgomery County

**Business Description:** Food manufacturing consultants

**Preferred Farming Practices:** Conventional, Certified Organic

**Products Needed:** Apricots, Blackberries, Cherries, Garlic, Hot Peppers, Peaches, Strawberries

---

## Sweetgreen

www.sweetgreen.com

### Allison Blansfield, Value Chain Coordinator

allison.blansfield@sweetgreen.com, (203) 300-1878

8840 Washington Blvd, Fl 4, Culver City, CA 90232  
Los Angeles County

**Business Description:** A fast/casual restaurant chain serving salads and grain bowls. We seek to build a network of local growers supporting our stores in DC, Philadelphia, NYC and Boston. We are intentional about our sourcing practices and are looking to partner and grow with our farmers!

**Preferred Farming Practices:** Conventional, Certified Organic, Other (Hydroponics)

**Preferred Food Quality Programs:** USDA GAP/GHP Certification, USDA Harmonized GAP

**Products Needed:** All fruits and vegetables, Chicken, All seafood, Cheese, Yogurt

---

---

**Tall Tales Brewing Co.**

www.talltalesbrew.com

**Beth Hearn, General Manager**

beth@talltalesbrew.com, (410) 543-2739

**Heather Malinger, Manager**

heather@talltalesbrew.com, (410) 543-2739

**Marlin Deacon, Chef**

marlin@talltalesbrew.com, (410) 543-2739

6929 Heron Grove Court, Parsonsburg, MD 21849  
Wicomico County

**Business Description:** Microbrewery restaurant specializing in whole ingredient cooking.

**Preferred Farming Practices:** Grass Fed/Pastured, Certified Organic

**Products Needed:** All fruits and vegetables, Beef, Chicken, Pork, Turkey, Crab Meat, Mussels, Oysters, Shrimp, All dairy and egg products

---

**Union Hospital of Cecil County**

www.uhcc.com

**Holly Emmons, Food Service Manager**

hemmons@uhcc.com, (410) 392-7045

106 Bow St., Elkton, MD 21921  
Cecil County

**Business Description:** Not-for-profit hospital.

**Preferred Farming Practices:** Grass Fed/Pastured, Certified Organic

**Preferred Food Quality Programs:** Rabbit and Poultry On-Farm Slaughter/Processing Program, USDA Inspection (Beef, Pork, Poultry)

**Products Needed:** All fruits and vegetables, All meats, All seafood, All dairy and egg products

---

**Westin Annapolis**

www.westinannapolis.com

**Kurt Peter, Executive Chef**

kpeter@westnannapolis.com, (410) 972-4339

**Ricky Rice, Sous Chef**

rrice@westinannapolis.com, (410) 972-4339

**William Knott, Kitchen Supervisor**

wknott@westinannapolis.com, (410) 972-4339

**Alex Orellana, Kitchen Supervisor**

aorellana@westinannapolis.com, (410) 972-4339

100 Westgate Circle, Annapolis, MD 21401  
Anne Arundel County

**Business Description:** Full service hotel; Lounge for breakfast, lunch, and dinner; In-room dining. 20,000 sq. ft. meeting space.

**Preferred Farming Practices:** Conventional, Grass Fed/Pastured, Certified Organic, Other (local)

**Preferred Food Quality Programs:** USDA Inspection (Beef, Pork, Poultry)

**Products Needed:** All fruits and vegetables, All meats, All seafood, All dairy and egg products

---

**Whole Foods Market**

www.wholefoodsmarket.com

**Daniel Knox, Grocery Bakery Deli Buyer**

daniel.knox@wholefoods.com, (301) 683-0030

**Deanna Miano, Specialty Cheese Buyer**

deanna.miano@wholefoods.com, (301) 984-4747

**Jessica Vanderdys, Grocery Buyer**

Jessica.Vanderdys@wholefoods.com, (301) 984-4747

1555 Cabin Branch Drive, Landover MD, 20785  
Prince George's County  
5515 Security Lane, Ste 900, Rockville, MD 20852  
Montgomery County

**Business Description:** National grocer offering the finest natural and organic foods available while maintaining the strictest quality standards in the industry

**Preferred Farming Practices:** Grass Fed/Pastured, Certified Organic

**Preferred Food Quality Programs:** Maryland Egg Quality Assurance, MD GAP Certification, Maryland Egg Quality Assurance, USDA GAP/GHP Certification, USDA Harmonized GAP, Inspection (Beef, Pork, Poultry)

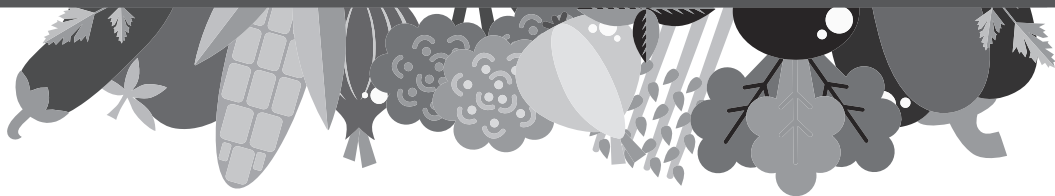
**Products Needed:** All fruits and vegetables, All meats, All seafood, All dairy and egg products

---



## OTHER ATTENDEES

AAEDC  
Alice's AgriMaryland  
Anne Arundel Medical Center  
Baltimore City Public Schools  
Bethesda Magazine  
Calvert County Public Schools  
Caroline County Public Schools  
Cecil County Office of Economic Development  
Charles County Government Economic Development Department  
City of Gaithersburg  
Community FARE  
Crow Insurance Agency  
Finch Farm  
Fridays Creek Winery  
Fully Grown  
FunkeSolutions  
Greenbelt Farmers Market  
Howard County Economic Development Authority  
LMD Enterprises  
MARBIDCO  
Market Solutions LLC  
Maryland Food Bank  
Maryland State Department of Education  
Mason Dixon Country  
Olney Farmers Market  
Reed Hellman Wordsmith  
Southern Maryland Agricultural Development Commission (SMADC)  
St. Mary's County Department of Economic Development  
University of Maryland FSNE  
U.S. Department of Commerce, U.S. Commercial Service-Baltimore  
What's Up Annapolis Magazine



---

## AAEDC

Lisa Barge, Ag Marketing and Development Mgr  
2660 Riva Road, Suite 200, Annapolis, MD 21401  
Anne Arundel County  
(410) 222-7410  
barge@aaedc.org  
www.aaedc.org  
**Business Description:** Support for the ag business community in AA County.

---

## Alice's AgriMaryland

Alice Settle-Raskin, Owner/Consultant  
1485 Old Annapolis Road, Woodbine, MD 21797  
Howard County  
(240) 449-6435  
alices.agrimaryland@gmail.com  
www.alices-agrimaryland.com  
**Business Description:** Alice's AgriMaryland is focused on promoting and marketing Maryland's agribusiness community including our local farms, farmers, farmers' markets, produce, livestock, agritourism and our many agribusiness related operations. Buying local, fresh-from-the-farm products is healthy. The added benefit is it supports the local agricultural economy and adds to our quality of life here in Maryland.

I am also representing the Mount Airy Main Street Farmers' Market, seeking vendors for our Wed. market, mid-May thru Sept. See www. MountAiryMainStreetFarmersMarket.Weebly.com

---

## Town of Mount Airy

Ashley Collier, Mount Airy Main Street Manager  
110 S. Main Street, P.O. Box 50  
Mount Airy, MD 21771  
acollier@mountairymd.org

---

## Anne Arundel Medical Center

Mary Ellen Tuma, Director of Food and Nutrition  
2001 Medical Pkwy,  
Annapolis, MD 21401  
Anne Arundel County  
(443) 481-5090  
mtuma@aahs.org  
**Business Description:** Food service dept at hospital

---

---

## Baltimore City Public Schools

Cynthia Shea, Staff Associate  
200 E. North Ave, Baltimore, MD 21218  
Baltimore City  
(443) 642-4338  
cashea@bcps.k12.md.us  
**Business Description:** Baltimore City Public Schools Food and Nutrition Department.

---

## Bethesda Magazine

Carole Sugarman, Contributing Editor/Food Writer  
7768 Woodmont Ave. #204, Bethesda, MD 20814  
Montgomery County  
(301) 524-6687  
carolesugarman@comcast.net  
www.bethesdamagazine.com  
**Business Description:** Bimonthly magazine serving lower Montgomery County.

---

## Calvert County Public Schools

Valarie Parmer, Dietitian/Nutrition Specialist  
1305 Dares Beach Rd., Prince Frederick, MD 20657  
Calvert County  
(443) 486-4027  
parmerv@calvertnet.k12.md.us  
www.calvertnet.k12.md.us  
**Business Description:** Public School Child Nutrition Department

---

## Caroline County Public Schools

Beth Brewster, Food Service Supervisor  
414 Gay Street, Denton, MD 21629  
Caroline County  
(410) 479-3261  
brewster.amanda@ccpsstaff.org  
**Business Description:** Caroline County Public Schools.

---



---

## Cecil County Office of Economic Development

Joanne Richart-Young, Agriculture Coordinator  
 200 Chesapeake Blvd., Suite 2700, Earleville, MD 21921  
 Cecil County  
 (410) 996-8469  
 jrichart@ccgov.org  
<http://www.cecilbusiness.org>

**Business Description:** Economic Development / Agriculture - "Chamber of Commerce for Agriculture"

---

## Charles County Government Economic Development Department

Debra Jones, Chief of Business Development  
 10665 Stanhaven Place, Suite 206, White Plains, MD 20695  
 Charles County  
 (301) 885-1340  
 oliverl@charlescounty.org  
[www.MeetCharlesCounty.com](http://www.MeetCharlesCounty.com)

**Business Description:** Charles County economic development.

---

## City of Gaithersburg

Amanda Cornaglia, Market Coordinator  
 506 S. Frederick Ave, Gaithersburg, MD 20877  
 Montgomery County  
 (301) 258-6350  
 acornaglia@gaithersburgmd.gov  
[www.gaithersburgmd.gov](http://www.gaithersburgmd.gov)

**Business Description:** Farmers markets in the city of Gaithersburg; looking for year-round and seasonal vendors. Buying all meats, bison, emu, goat, all seafood, all dairy and egg products, coffee/tea, baked goods, grains, and other prepared food items.

---



---

## Community FARE

Janice Wiles, Director  
 4 E Church St, Frederick, MD 21701  
 Frederick County  
 (240) 626-5209  
 frederickfoodhub@gmail.com  
[www.communityfare.org](http://www.communityfare.org)

**Business Description:** Non-profit organization working to help safeguard a diverse and healthy local food economy that will preserve farmland integrity and biodiversity and ensure that food grown in central/western Maryland is accessible to residents of Frederick County and its regional neighbors. Buying all meats, all dairy and egg products.

---

## Crow Insurance Agency

Jules Hendrix, Associate Agent  
 106 S Broad Street, Middletown, DE 19709  
 New Castle County  
 (877) 204-3107  
 hendrj2@nationwide.com  
[www.CrowInsuranceTeam.com](http://www.CrowInsuranceTeam.com)

**Business Description:** We are a dynamic team of insurance professionals known for our dedicated customer service and a personal approach which ensures that every one of our clients is satisfied with their chosen insurance plan. Our agents specialize in Agribusiness, Farm, Crop, Specialty Ag (processing and manufacturing), Commercial, Home, Auto, Health and Life Insurance, and financial products, so we can provide you with an integrated package.

---

## Finchville Farms

Daniel Rider, Owner  
 5560 Dog Kennel Road, Rhodesdale, MD 21659  
 Dorchester  
 (410) 310-6218  
 Finchvillefarm3@gmail.com

**Business Description:** Specializing in garlic, (hardneck, German white). Hand-grown on Eastern Shore.

---

---

## Fridays Creek Winery

Frank Cleary, Manager  
 3485 Chaneyville Road, Owings, MD 20736  
 Calvert County  
 (410) 286-9463  
 Frank.Cleary@FridayCreek.com  
 www.FridayCreek.com  
**Business Description:** Wine maker and tasting room.

---

## Fully Grown

Brianna Billups  
 1142 Pelham Wood Road, Parkville, MD 21234  
 Baltimore County  
 (410) 905-8985  
 briannabillups95@gmail.com  
**Business Description:** Fully Grown is an organic line of fruit-based snacks, focused on changing the nutritional health of children, families and communities.

---

## FunkeSolutions

Brian Funk, Principal  
 1261 Maple Ave, Baltimore, MD 21227  
 Baltimore County  
 (410) 343-7368  
 brian@funkesolutions.com  
**Business Description:** Sustainable engineering/consulting (renewable energy, agriculture, manufacturing, recycling/compositing, program development)

---

## Greenbelt Farmers Market

Carissa Ralbovsky, Board Member  
 P.O. Box 613, Greenbelt, MD 20768  
 Prince George's County  
 (240) 476-8769  
 cralbovsky@greenbeltfarmersmarket.org  
**Business Description:** Located in Greenbelt, Maryland, the Greenbelt Farmers Market, Inc. (GFM) provides fresh, nutritious, high-quality food grown or produced in the region. The purpose of this venture is: to provide a venue for farmers and other vendors to bring fresh, nutritious, high-quality food grown or produced in the region to Greenbelt and neighboring communities; to foster direct connections between local shoppers and small-scale farmers and food producers; and to

enhance the Greenbelt Roosevelt Center by providing a friendly, central setting for shopping and socializing. The Greenbelt Farmers Market is a on-going project that began in June 2008 in the Greenbelt Community. Farmers that have been accepted into the market sell their food and processed food items on Sunday mornings, May through November from 10am to 2pm. It is sustained financially through a series of grants and assessed vendor fees. GFM also seeks to create: Increased support for local farmers Increased stewardship of farmland and, ultimately, the Beaverdam Creek Watershed Deeper connections between Greenbelt (also Beltsville, Hyattsville and College Park) residents and farmers, thus giving consumers a greater appreciation and understanding of farming practices and food production Improved nutrition by providing a greater variety of accessible (with regard to location and value) fresh and local produce Improved social interactions and bridged barriers for a diverse, healthy community.

---

## Howard County Economic Development Authority

Kathy Johnson, Agriculture Development Manager  
 9250 Bendix Rd., N, Columbia, MD 21045  
 Howard County  
 (410) 313-6500  
 kljohnson@hceda.org  
**Business Description:** Agriculture promotion, marketing and business development

---

## LMD Enterprises

Larry Douglas, President  
 506 Mukberry Street, Salisbury, MD 21804  
 Wicomico County  
 (443) 235-3081  
 lmde128@gmail.com  
 www.lmdenterprises.shopamsoil.com  
**Business Description:** Aggrand natural fertilizer dealer. Aggrand natural fertilizers are a non-toxic, non-leaching, environmentally friendly, nutrient dense, cost effective alternative to chemical fertilizers. All products are liquid concentrate, can be mixed together for easy application (foliar & soil), and are universal (crops, trees, lawns, flowers,etc).

---

## MARBIDCO

Karen Gindes, Communications Officer  
 1410 Forest Drive, Suite 21, Annapolis, MD 21403  
 Anne Arundel County  
 (410) 267-6807  
 kgindes@marbidco.org  
 www.marbidco.org

**Business Description:** MARBIDCO is an economic development organization whose mission is to provide specialized financing and business development assistance to support the continued viability of Maryland's agricultural and resource-based industries. We work closely with our State agency partners: MDA, Department of Commerce, DNR, MEA, RMC, MFCA and UME, as well as our allied rural business organizations and commercial lenders in the private sector, to make our financial assistance and other services available to those that need them.

---

## Market Solutions LLC

Mark D. Newman, President  
 4306 Leland St., Suite 101, Chevy Chase, MD 20815  
 Montgomery and Talbot Counties  
 (301) 654-2949  
 marknewman@marketsrus.com  
 www.marketsolutionsllc.com

**Business Description:** Market Solutions LLC is a leading food industry and agribusiness research and consulting firm serving business and trade associations in Maryland and worldwide.

---

## Maryland Food Bank

Butch Langenfelder, Food Sourcing Manager  
 2200 Halethorpe Farms Road, Baltimore, MD 21227  
 Baltimore County  
 (410) 737-8282  
 Langenfelder@mdfoodbank.org  
 www.mdfoodbank.org

**Business Description:** The Maryland Food Bank partners with local farmers, retailers, manufacturers, etc. to secure food for families in need throughout the state. We accept all meats, seafood, dairy and egg products

---

## Maryland State Department of Education

Sarah Kilby, Meal Quality Specialist  
 200 West Baltimore Street, Baltimore, MD 21230  
 Baltimore City  
 (410) 767-0513  
 sarah.kilby@maryland.gov

**Business Description:** Maryland state agency for education.

---

## Mason Dixon Country

Mindy Schneider, Rural Tourism & Development Consultant – MLS Consulting  
 708 Highland Road, P.O. Box 23, Street, MD 21154  
 Harford County  
 (717) 676-6993  
 mls.ruraldevelopment@gmail.com  
 www.masondixoncountry.com

**Business Description:** Mason Dixon Country is a destination marketing initiative for Northern Harford County Maryland and Southern York County Pennsylvania. Working to promote and preserve the area's rich rural heritage through tourism, event planning, marketing and economic development. We are exploring innovative ways to tap into new, growing markets.

---

## Olney Farmers Market

Janet Terry, Olney Farmers Market President  
 P.O. Box 1787, Olney, MD 20832  
 Montgomery County  
 (202) 257-5326  
 jterrymarket@gmail.com  
 www.olneyfarmersmarket.org

**Business Description:** We are a producer-only farmers market in Olney, MD. We run from 9 a.m. to 1 p.m. every Sunday morning.

---

### Reed Hellman Wordsmith

Reed Hellman, Food Writer  
 8109 Dogwood Road, Windsor Mill, MD 21244  
 Howard County  
 (410) 265-7471  
 reedhellmanwordsmith@comcast.net  
 www.reedhellmanwordsmith.com  
**Business Description:** Food columnist for Recreation News.

---

### Southern Maryland Agricultural Development Commission (SMADC)

Susan McQuilkin, Marketing Executive  
 P.O. Box 745  
 15045 Burnt Store Road, Hughesville, MD 20637  
 Charles County  
 (301) 274-1922  
 smcquilkin@smadc.com  
 www.smacd.com  
**Business Description:** The Southern Maryland Agricultural Development Commission (SMADC) is shaping the future of farms and food through farmland preservation, extensive support for regional farmers, and programs to help consumers find the farms they need. Find out more at SMADC.com.

---

### St. Mary's County Department of Economic Development

Donna Sasscer, Agriculture Manager  
 P.O. Box 653, Leonardtown, MD 20636  
 St. Mary's County  
 (240) 309-4022  
 donna.sasscer@stmarysmd.com  
**Business Description:** St. Mary's County Government

---



---

### University of Maryland FSNE

Heather Buritsch, Gardening for Nutrition Coordinator  
 10632 Little Patuxent Parkway, Suite 435  
 Columbia, MD 21044  
 Howard County  
 (410) 715-6903  
 buritsch@umd.edu  
 www.eatsmart.umd.edu  
**Business Description:** Maryland SNAP-Ed, Nutrition Education program

---

### U.S. Department of Commerce, U.S. Commercial Service-Baltimore

Aisha Jones, Sr. International Trade Specialist  
 300 West Pratt Street, Baltimore, MD 21201  
 Baltimore City  
 (410) 962-6896  
 aisha.jones@trade.gov  
 www.export.gov/maryland  
**Business Description:** The U.S. Commercial Service is the trade promotion arm of the U.S. Department of Commerce's International Trade Administration. U.S. Commercial Service trade professionals in over 100 U.S. cities and in more than 75 countries help U.S. companies get started in exporting or increase sales to new global markets.

---

### What's Up Annapolis Magazine

Rita Calvert  
 1518 Circle Dr, Annapolis, MD 21409  
 Anne Arundel County  
 (443) 254-2640  
 outreach7@verizon.net  
**Business Description:** Food writer for What's Up Media-What's Up Annapolis Magazine, What's Up Eastern Shore Magazine, What's Up West County Magazine.

---

